

MYL7 Antibody



PACO45250

Product Information

Size:

50ul

Reactivity:

Human, Mouse

Source:

Rabbit

Isotype:

IgG

Applications:

ELISA, WB, IHC

Recommended dilutions:

ELISA:1:2000-1:10000, WB:1:1000-1:5000,
IHC:1:20-1:200

Protein Background:

A band, cytosol, myosin complex, muscle contraction.

Gene ID:

MYL7

Uniprot

Q01449

Synonyms:

Myosin regulatory light chain 2, atrial isoform (MLC-2a) (MLC2a) (Myosin light chain 2a) (Myosin regulatory light chain 7), MYL7, MYL2A MYLC2A

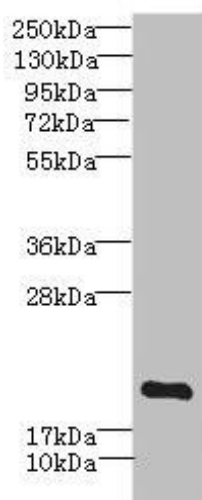
Immunogen:

Recombinant Human Myosin regulatory light chain 2, atrial isoform protein (1-175AA).

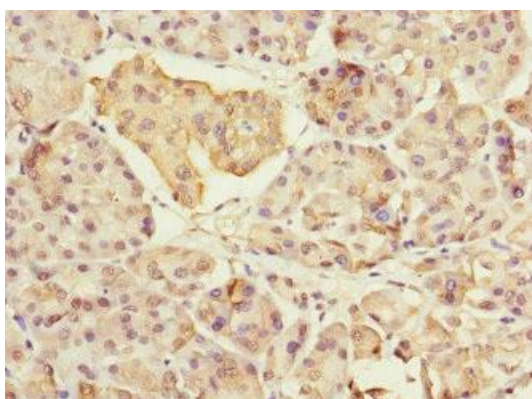
Storage:

PBS with 0.02% sodium azide, 50% glycerol, pH7.3.

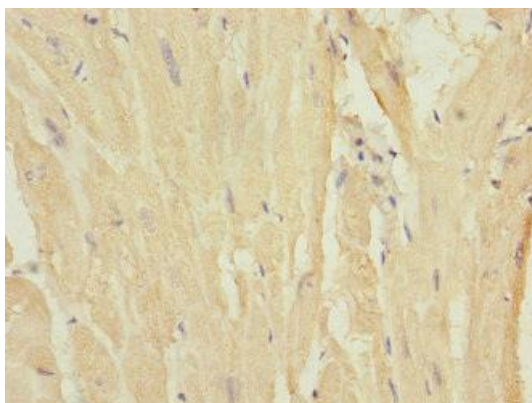
Product Images



Western blot. All lanes: MYL7 antibody IgG at 2.69 μ g/ml + Mouse skeletal muscle tissue. Secondary. Goat polyclonal to rabbit IgG at 1/10000 dilution. Predicted band size: 19 kDa. Observed band size: 19 kDa.



Immunohistochemistry of paraffin-embedded human pancreatic tissue using PACO45250 at dilution of 1:100.



Immunohistochemistry of paraffin-embedded human heart tissue using PACO45250 at dilution of 1:100.