

Product Information

Size:

50ul

Reactivity:

Human

Source:

Rabbit

Isotype:

IgG

Applications:

ELISA, IHC

Recommended dilutions:

ELISA:1:2000-1:10000, IHC:1:20-1:200

Protein Background:

E3 ubiquitin ligase catalyzing the covalent attachment of ubiquitin moieties onto substrate proteins. Involved in the TLR and IL-1 signaling pathways via interaction with the complex containing IRAK kinases and TRAF6. Mediates 'Lys-63'-linked polyubiquitination of IRAK1. Can activate AP1/JUN and ELK1. Not required for NF-kappa-B activation.

Gene ID:

PELI3

Uniprot

Q8N2H9

Synonyms:

E3 ubiquitin-protein ligase pellino homolog 3 (Pellino-3) (EC 2.3.2.27) (RING-type E3 ubiquitin transferase pellino homolog 3), PELI3

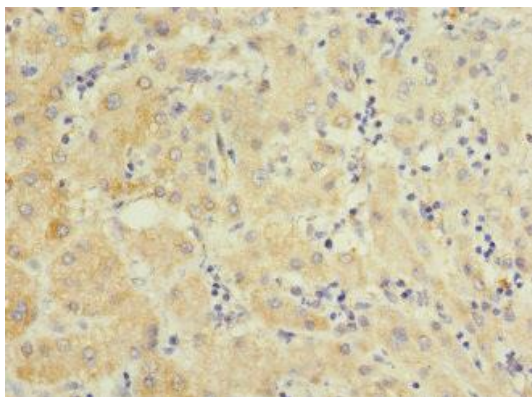
Immunogen:

Recombinant Human E3 ubiquitin-protein ligase pellino homolog 3 protein (1-280AA).

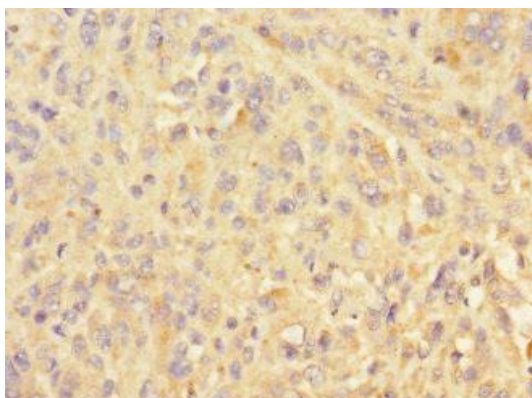
Storage:

PBS with 0.02% sodium azide, 50% glycerol, pH7.3.

Product Images



Immunohistochemistry of paraffin-embedded human liver cancer using PACO45253 at dilution of 1:100.



Immunohistochemistry of paraffin-embedded human melanoma using PACO45253 at dilution of 1:100.