

Product Information

Size:

50ul

Reactivity:

Human

Source:

Rabbit

Isotype:

IgG

Applications:

ELISA, WB, IHC

Recommended dilutions:

ELISA:1:2000-1:10000, WB:1:1000-1:5000,
IHC:1:20-1:200

Protein Background:

Promotes adhesion of endothelial cells through interaction with the alpha-v/beta-3 integrin receptor. Inhibits formation of vascular-like structures. May be involved in regulation of vascular morphogenesis of remodeling in embryonic development.

Gene ID:

EDIL3

Uniprot

O43854

Synonyms:

EGF-like repeat and discoidin I-like domain-containing protein 3 (Developmentally-regulated endothelial cell locus 1 protein) (Integrin-binding protein DEL1), EDIL3, DEL1

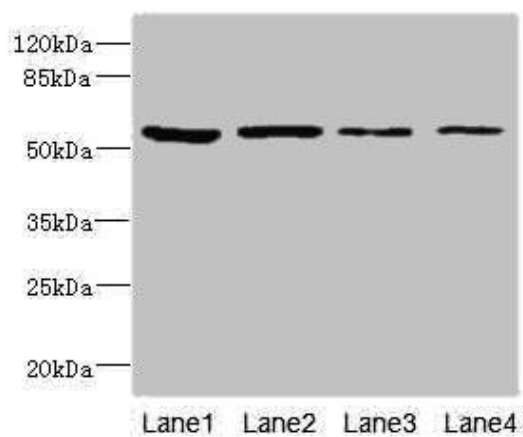
Immunogen:

Recombinant Human EGF-like repeat and discoidin I-like domain-containing protein 3 protein (60-300AA).

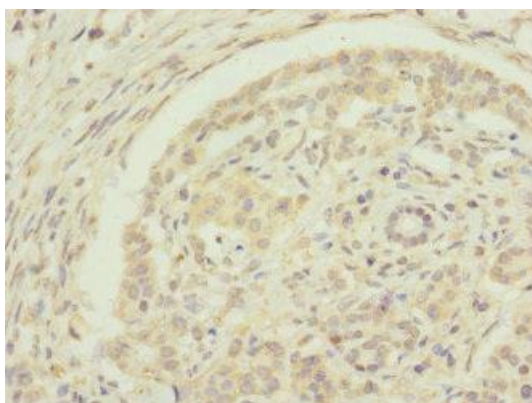
Storage:

PBS with 0.02% sodium azide, 50% glycerol, pH7.3.

Product Images



Western blot. All lanes: EDIL3 antibody at 3.09 μ g/ml. Lane 1: 293T whole cell lysate. Lane 2: Hela whole cell lysate. Lane 3: HepG2 whole cell lysate. Lane 4: K562 whole cell lysate. Secondary. Goat polyclonal to rabbit IgG at 1/10000 dilution. Predicted band size: 54, 53 kDa. Observed band size: 54 kDa.



Immunohistochemistry of paraffin-embedded human pancreatic cancer using PACO45320 at dilution of 1:100.