

PACO45339

Product Information

Size:

50ul

Reactivity:

Human, Mouse

Source:

Rabbit

Isotype:

IgG

Applications:

ELISA, WB, IHC

Recommended dilutions:

ELISA:1:2000-1:10000, WB:1:1000-1:5000,
IHC:1:20-1:200

Protein Background:

Inhibitory receptor which may contribute to the down-regulation of cytolytic activity in natural killer (NK) cells, and to the down-regulation of mast cell degranulation.

Gene ID:

CD300A

Uniprot

Q9UGN4

Synonyms:

CMRF35-like molecule 8 (CLM-8) (CD300 antigen-like family member A) (CMRF-35-H9) (CMRF35-H9) (CMRF35-H) (IRC1/IRC2) (Immunoglobulin superfamily member 12) (IgSF12) (Inhibitory receptor protein 60) (IRp60) (NK inhibitory receptor) (CD antigen CD300a), CD300A, CMRF35H IGSF12

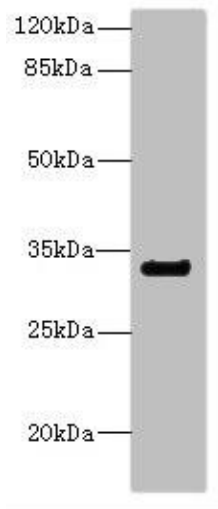
Immunogen:

Recombinant Human CMRF35-like molecule 8 protein (18-180AA).

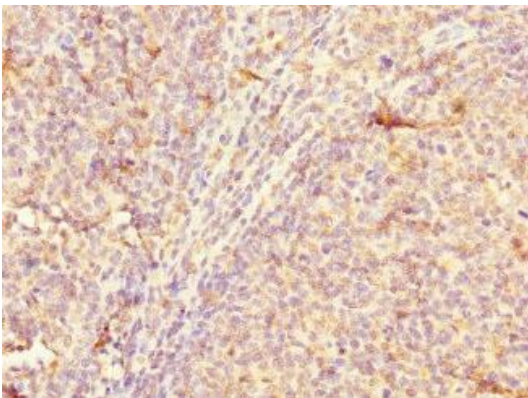
Storage:

PBS with 0.02% sodium azide, 50% glycerol, pH7.3.

Product Images



Western blot. All lanes: CNTN4 antibody IgG at 2.22 μ g/ml + Mouse kidney tissue. Secondary. Goat polyclonal to rabbit IgG at 1/10000 dilution. Predicted band size: 34, 21, 12, 17 kDa. Observed band size: 34 kDa.



Immunohistochemistry of paraffin-embedded human tonsil tissue using PACO45339 at dilution of 1:100.