

# SLC1A7 Antibody



PACO45359

---

## Product Information

**Size:**

50ul

**Reactivity:**

Human

**Source:**

Rabbit

**Isotype:**

IgG

**Applications:**

ELISA, IHC, IF

**Recommended dilutions:**

ELISA:1:2000-1:10000, IHC:1:20-1:200,  
IF:1:50-1:200

**Protein Background:**

Transports L-glutamate; the L-glutamate uptake is sodium- and voltage-dependent and chloride-independent. Its associated chloride conductance may participate in visual processing.

**Gene ID:**

SLC1A7

**Uniprot**

O00341

**Synonyms:**

Excitatory amino acid, transporter 5 (Retinal glutamate transporter) (Solute carrier family 1 member 7), SLC1A7, EAAT5

**Immunogen:**

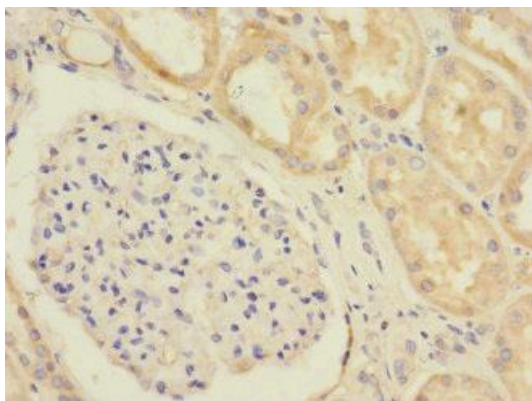
Recombinant Human Excitatory amino acid, transporter 5 protein (115-220AA).

**Storage:**

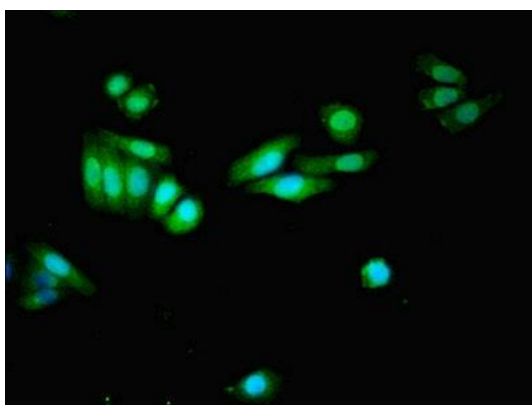
PBS with 0.02% sodium azide, 50% glycerol, pH7.3.

## Product Images

---



Immunohistochemistry of paraffin-embedded human kidney tissue using PACO45359 at dilution of 1:100.



Immunofluorescent analysis of HepG2 cells using PACO45359 at dilution of 1:100 and Alexa Fluor 488-conjugated AffiniPure Goat Anti-Rabbit IgG(H+L).