

# FCRL2 Antibody



PACO45368

---

## Product Information

**Size:**

50ul

**Reactivity:**

Human

**Source:**

Rabbit

**Isotype:**

IgG

**Applications:**

ELISA, IHC

**Recommended dilutions:**

ELISA:1:2000-1:10000, IHC:1:20-1:200

**Protein Background:**

May have an regulatory role in normal and neoplastic B cell development.

**Gene ID:**

FCRL2

**Uniprot**

Q96LA5

**Synonyms:**

Fc receptor-like protein 2 (FcR-like protein 2) (FcRL2) (Fc receptor homolog 2) (FcRH2) (IFGP family protein 4) (Immunoglobulin receptor translocation-associated protein 4) (SH2 domain-containing phosphatase anchor protein 1) (CD antigen CD307b), FCRL2, FCRH2 IFGP4 IRTA4 SPAP1

**Immunogen:**

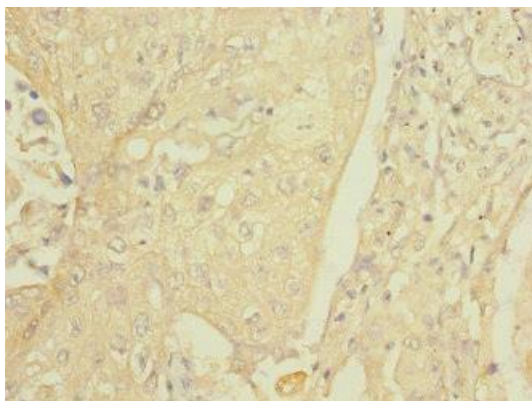
Recombinant Human Fc receptor-like protein 2 protein (20-100AA).

**Storage:**

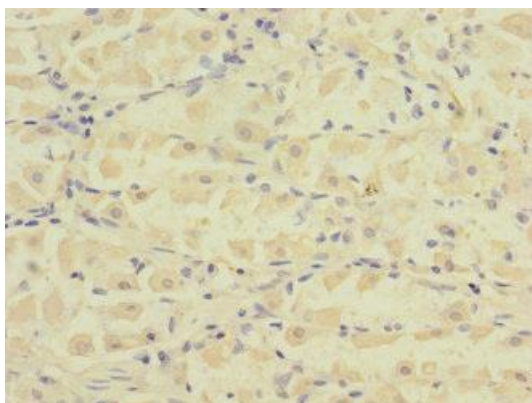
PBS with 0.02% sodium azide, 50% glycerol, pH7.3.

## Product Images

---



Immunohistochemistry of paraffin-embedded human lung cancer using PACO45368 at dilution of 1:100.



Immunohistochemistry of paraffin-embedded human gastric cancer using PACO45368 at dilution of 1:100.