

Product Information

Size:

50ul

Reactivity:

Human

Source:

Rabbit

Isotype:

IgG

Applications:

ELISA, WB, IHC

Recommended dilutions:

ELISA:1:2000-1:10000, WB:1:1000-1:5000,
IHC:1:20-1:200

Protein Background:

Receptor tyrosine kinase which binds promiscuously transmembrane ephrin-B family ligands residing on adjacent cells, leading to contact-dependent bidirectional signaling into neighboring cells. The signaling pathway downstream of the receptor is referred to as forward signaling while the signaling pathway downstream of the ephrin ligand is referred to as reverse signaling. Together with its cognate ligand/functional ligand EFNB2 plays a central role in heart morphogenesis and angiogenesis through regulation of cell adhesion and cell migration. EPHB4-mediated forward signaling controls cellular repulsion and segregation from EFNB2-expressing cells. Plays also a role in postnatal blood vessel remodeling, morphogenesis and permeability and is thus important in the context of tumor angiogenesis.

Gene ID:

EPHB4

Uniprot

P54760

Synonyms:

Ephrin type-B receptor 4 (EC 2.7.10.1) (Hepatoma transmembrane kinase) (Tyrosine-protein kinase TYRO11), EPHB4, HTK MYK1 TYRO11

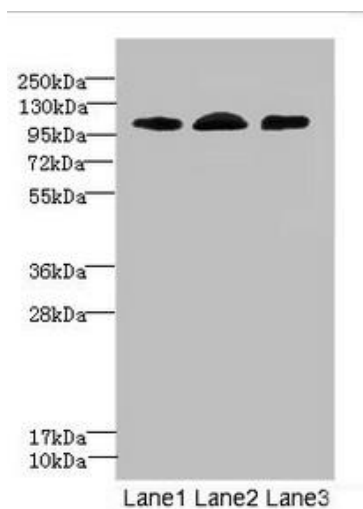
Immunogen:

Recombinant Human Ephrin type-B receptor 4 protein (300-540AA).

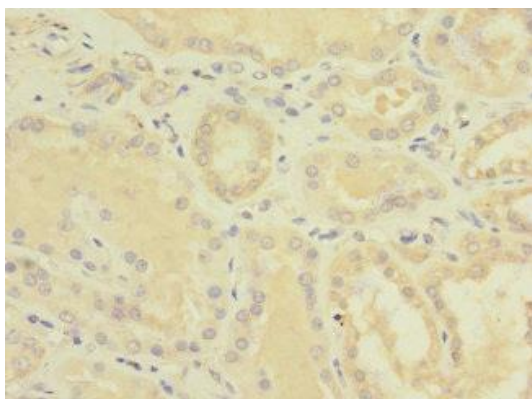
Storage:

PBS with 0.02% sodium azide, 50% glycerol, pH7.3.

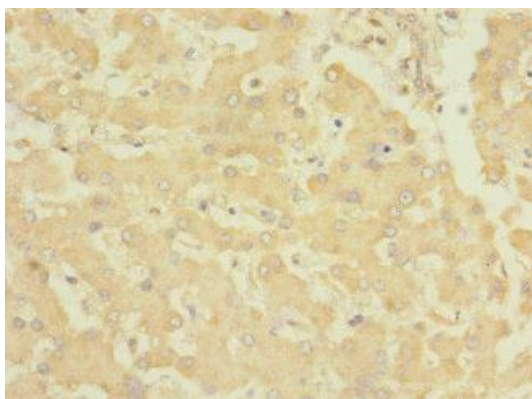
Product Images



Western blot. All lanes: EPHB4 antibody at 2.71 μ g/ml. Lane 1: A549 whole cell lysate. Lane 2: 293T whole cell lysate. Lane 3: Hela whole cell lysate. Secondary. Goat polyclonal to rabbit IgG at 1/10000 dilution. Predicted band size: 109, 56, 34, 46 kDa. Observed band size: 109 kDa.



Immunohistochemistry of paraffin-embedded human kidney tissue using PACO45370 at dilution of 1:100.



Immunohistochemistry of paraffin-embedded human liver tissue using PACO45370 at dilution of 1:100.