

---

## Product Information

**Size:**

50ul

**Reactivity:**

Human, Mouse, Rat

**Source:**

Rabbit

**Isotype:**

IgG

**Applications:**

ELISA, WB

**Recommended dilutions:**

ELISA:1:2000-1:10000, WB:1:1000-1:5000

**Protein Background:**

Thrombomodulin is a specific endothelial cell receptor that forms a 1:1 stoichiometric complex with thrombin. This complex is responsible for the conversion of protein C to the activated protein C (protein Ca). Once evolved, protein Ca scissions the activated cofactors of the coagulation mechanism, factor Va and factor VIIIa, and thereby reduces the amount of thrombin generated.

**Gene ID:**

THBD

**Uniprot**

P07204

**Synonyms:**

Thrombomodulin (TM) (Fetomodulin) (CD antigen CD141), THBD, THRM

**Immunogen:**

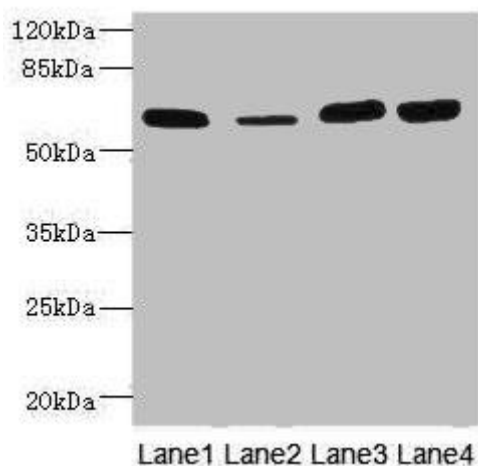
Recombinant Human Thrombomodulin protein (200-500AA).

**Storage:**

PBS with 0.02% sodium azide, 50% glycerol, pH7.3.

## Product Images

---



Western blot. All lanes: THBD antibody at 3.07 $\mu$ g/ml. Lane 1: Rat heart tissue. Lane 2: Mouse kidney tissue. Lane 3: A549 whole cell lysate. Lane 4: A431 whole cell lysate. Secondary. Goat polyclonal to rabbit IgG at 1/10000 dilution. Predicted band size: 60 kDa. Observed band size: 60 kDa.