

CHRNA2 Antibody



PACO45421

Product Information

Size:

50ul

Reactivity:

Human

Source:

Rabbit

Isotype:

IgG

Applications:

ELISA, IHC

Recommended dilutions:

ELISA:1:2000-1:10000, IHC:1:20-1:200

Protein Background:

After binding acetylcholine, the AChR responds by an extensive change in conformation that affects all subunits and leads to opening of an ion-conducting channel across the plasma membrane.

Gene ID:

CHRNA2

Uniprot

Q15822

Synonyms:

Neuronal acetylcholine receptor subunit alpha-2, CHRNA2

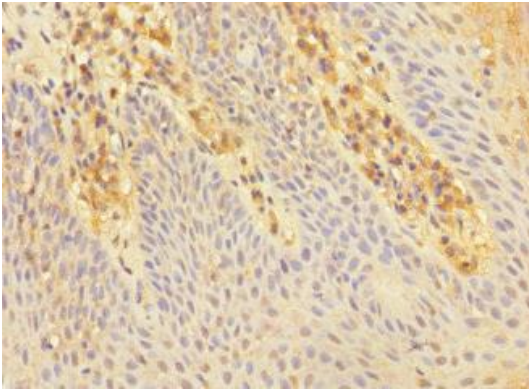
Immunogen:

Recombinant Human Neuronal acetylcholine receptor subunit alpha-2 protein (27-264AA).

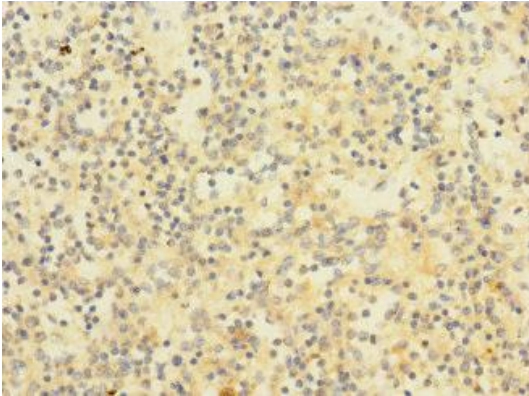
Storage:

PBS with 0.02% sodium azide, 50% glycerol, pH7.3.

Product Images



Immunohistochemistry of paraffin-embedded human tonsil tissue using PACO45421 at dilution of 1:100.



Immunohistochemistry of paraffin-embedded human spleen tissue using PACO45421 at dilution of 1:100.