

PACO45427

Product Information

Size:

50ul

Reactivity:

Human

Source:

Rabbit

Isotype:

IgG

Applications:

ELISA, IHC

Recommended dilutions:

ELISA:1:2000-1:10000, IHC:1:20-1:200

Protein Background:

Mediates cellular binding of particles and immune complexes that have activated complement.

Gene ID:

CR1

Uniprot

P17927

Synonyms:

Complement receptor type 1 (C3b/C4b receptor) (CD antigen CD35), CR1, C3BR

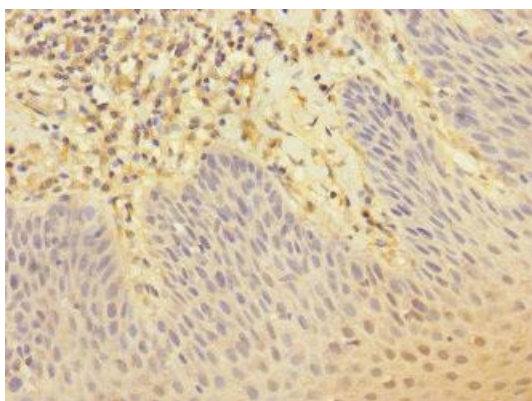
Immunogen:

Recombinant Human Complement receptor type 1 protein (420-550AA).

Storage:

PBS with 0.02% sodium azide, 50% glycerol, pH7.3.

Product Images



Immunohistochemistry of paraffin-embedded human tonsil tissue using PACO45427 at dilution of 1:100.