

DSC1 Antibody



PACO45430

Product Information

Size:

50ul

Reactivity:

Human

Source:

Rabbit

Isotype:

IgG

Applications:

ELISA, IHC

Recommended dilutions:

ELISA:1:2000-1:10000, IHC:1:20-1:200

Protein Background:

Component of intercellular desmosome junctions. Involved in the interaction of plaque proteins and intermediate filaments mediating cell-cell adhesion. May contribute to epidermal cell positioning (stratification) by mediating differential adhesiveness between cells that express different isoforms. Linked to the keratinization of epithelial tissues.

Gene ID:

DSC1

Uniprot

Q08554

Synonyms:

Desmocollin-1 (Cadherin family member 1) (Desmosomal glycoprotein 2/3) (DG2/DG3), DSC1, CDHF1

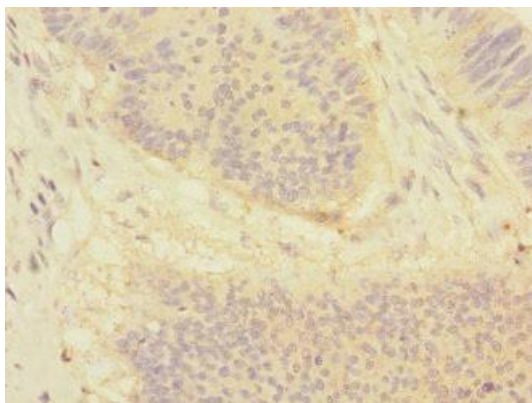
Immunogen:

Recombinant Human Desmocollin-1 protein (480-690AA).

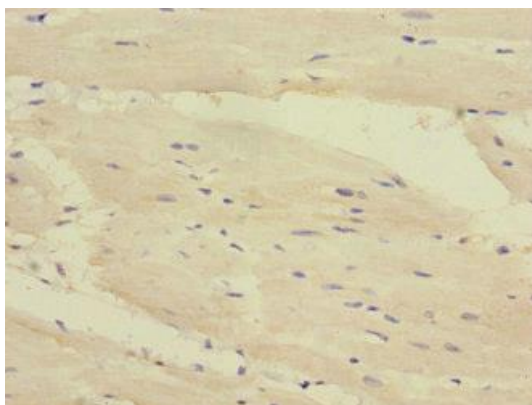
Storage:

PBS with 0.02% sodium azide, 50% glycerol, pH7.3.

Product Images



Immunohistochemistry of paraffin-embedded human colon cancer using PACO45430 at dilution of 1:100.



Immunohistochemistry of paraffin-embedded human heart tissue using PACO45430 at dilution of 1:100.