

# PCDH15 Antibody



PACO45463

---

## Product Information

**Size:**

50ul

**Reactivity:**

Human

**Source:**

Rabbit

**Isotype:**

IgG

**Applications:**

ELISA, IHC

**Recommended dilutions:**

ELISA:1:2000-1:10000, IHC:1:20-1:200

**Protein Background:**

Calcium-dependent cell-adhesion protein. Essential for maintenance of normal retinal and cochlear function.

**Gene ID:**

PCDH15

**Uniprot**

Q96QU1

**Synonyms:**

Protocadherin-15, PCDH15, USH1F

**Immunogen:**

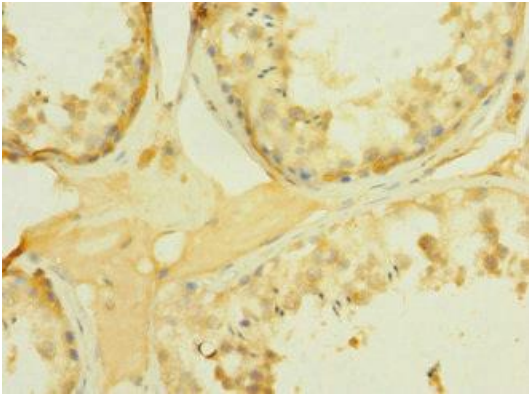
Recombinant Human Protocadherin-15 protein (160-400AA).

**Storage:**

PBS with 0.02% sodium azide, 50% glycerol, pH7.3.

## Product Images

---



Immunohistochemistry of paraffin-embedded human testis tissue using PACO45463 at dilution of 1:100.