

PACO45472

Product Information

Size:

50ul

Reactivity:

Human

Source:

Rabbit

Isotype:

IgG

Applications:

ELISA, IHC

Recommended dilutions:

ELISA:1:2000-1:10000, IHC:1:20-1:200

Protein Background:

Mediates the voltage-dependent sodium ion permeability of excitable membranes. Assuming opened or closed conformations in response to the voltage difference across the membrane, the protein forms a sodium-selective channel through which Na(+) ions may pass in accordance with their electrochemical gradient.

Gene ID:

SCN3A

Uniprot

Q9NY46

Synonyms:

Sodium channel protein type 3 subunit alpha (Sodium channel protein brain III subunit alpha) (Sodium channel protein type III subunit alpha) (Voltage-gated sodium channel subtype III) (Voltage-gated sodium channel subunit alpha Nav1.3), SCN3A, KIAA1356 NAC3

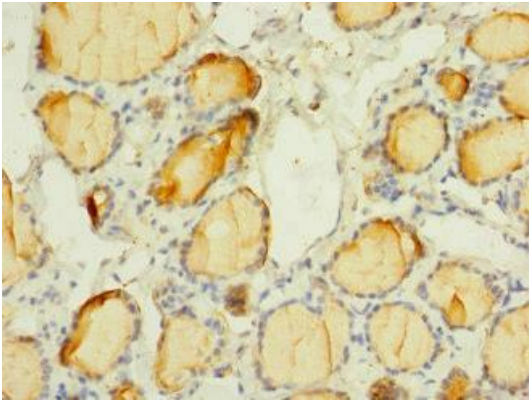
Immunogen:

Recombinant Human Sodium channel protein type 3 subunit α protein (274-400AA).

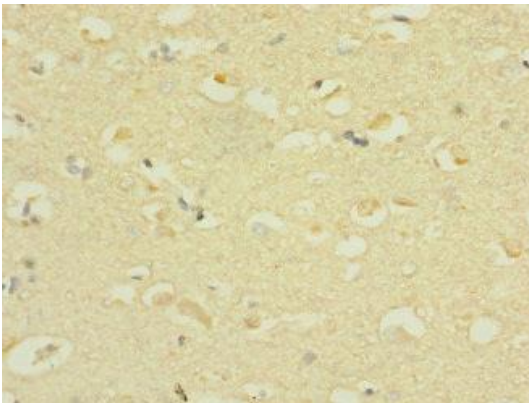
Storage:

PBS with 0.02% sodium azide, 50% glycerol, pH7.3.

Product Images



Immunohistochemistry of paraffin-embedded human thyroid tissue using PACO45472 at dilution of 1:100.



Immunohistochemistry of paraffin-embedded human brain tissue using PACO45472 at dilution of 1:100.