

PACO45476

Product Information

Size:

50ul

Reactivity:

Human, Rat

Source:

Rabbit

Isotype:

IgG

Applications:

ELISA, WB, IHC

Recommended dilutions:

ELISA:1:2000-1:10000, WB:1:1000-1:5000,
IHC:1:20-1:200

Protein Background:

Mediates the voltage-dependent sodium ion permeability of excitable membranes. Assuming opened or closed conformations in response to the voltage difference across the membrane, the protein forms a sodium-selective channel through which Na(+) ions may pass in accordance with their electrochemical gradient. In macrophages and melanoma cells, isoform 5 may participate in the control of podosome and invadopodia formation.

Gene ID:

SCN8A

Uniprot

Q9UQD0

Synonyms:

Sodium channel protein type 8 subunit alpha (Sodium channel protein type VIII subunit alpha) (Voltage-gated sodium channel subunit alpha Nav1.6), SCN8A, MED

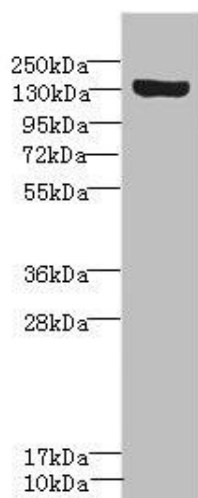
Immunogen:

Recombinant Human Sodium channel protein type 8 subunit α protein (1350-1440AA).

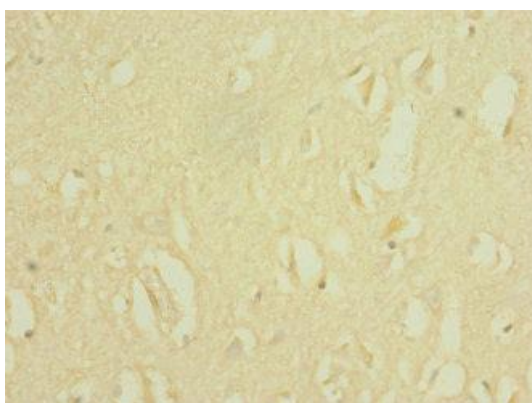
Storage:

PBS with 0.02% sodium azide, 50% glycerol, pH7.3.

Product Images



Western blot. All lanes: SCN8A antibody IgG at 1.18 μ g/ml + Rat heart tissue. Secondary. Goat polyclonal to rabbit IgG at 1/10000 dilution. Predicted band size: 226, 227, 146, 221 kDa. Observed band size: 226 kDa.



Immunohistochemistry of paraffin-embedded human brain tissue using PACO45476 at dilution of 1:100.