

# MPP6 Antibody



PACO45495

---

## Product Information

**Size:**

50ul

**Reactivity:**

Human

**Source:**

Rabbit

**Isotype:**

IgG

**Applications:**

ELISA, IHC

**Recommended dilutions:**

ELISA:1:2000-1:10000, IHC:1:20-1:200

**Protein Background:**

extracellular exosome, membrane, protein complex assembly.

**Gene ID:**

MPP6

**Uniprot**

Q9NZW5

**Synonyms:**

MAGUK p55 subfamily member 6 (Veli-associated MAGUK 1) (VAM-1), MPP6, VAM1

**Immunogen:**

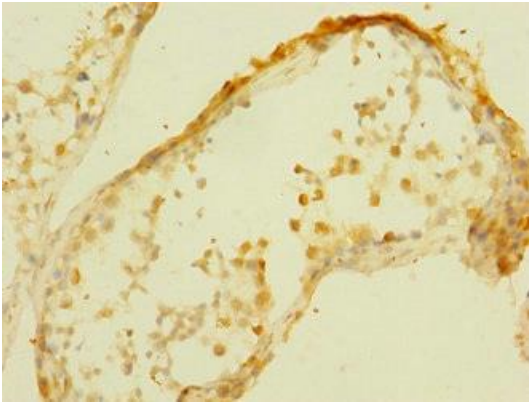
Recombinant Human MAGUK p55 subfamily member 6 protein (220-420AA).

**Storage:**

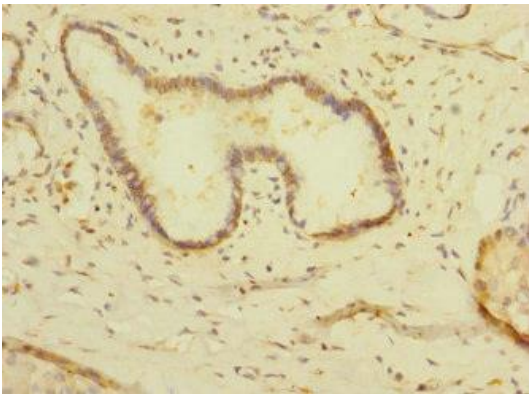
PBS with 0.02% sodium azide, 50% glycerol, pH7.3.

## Product Images

---



Immunohistochemistry of paraffin-embedded human testis tissue using PACO45495 at dilution of 1:100.



Immunohistochemistry of paraffin-embedded human pancreatic tissue using PACO45495 at dilution of 1:100.