

# MPP6 Antibody



PACO45496

---

## Product Information

**Size:**

50ul

**Reactivity:**

Human, Mouse

**Source:**

Rabbit

**Isotype:**

IgG

**Applications:**

ELISA, WB, IHC

**Recommended dilutions:**

ELISA:1:2000-1:10000, WB:1:1000-1:5000,  
IHC:1:20-1:200

**Protein Background:**

extracellular exosome, membrane, protein complex assembly.

**Gene ID:**

MPP6

**Uniprot**

Q9NZW5

**Synonyms:**

MAGUK p55 subfamily member 6 (Veli-associated MAGUK 1) (VAM-1), MPP6, VAM1

**Immunogen:**

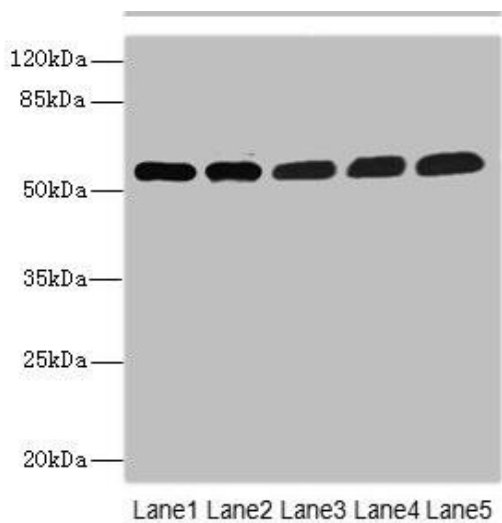
Recombinant Human MAGUK p55 subfamily member 6 protein (220-420AA).

**Storage:**

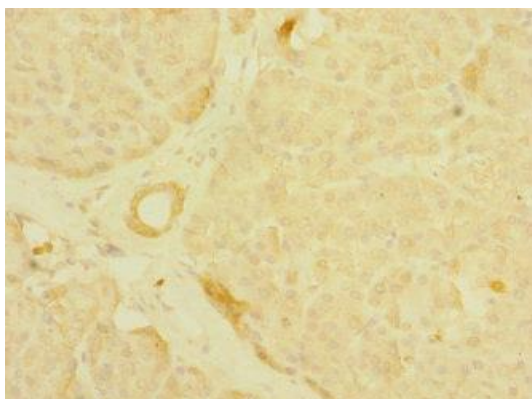
PBS with 0.02% sodium azide, 50% glycerol, pH7.3.

## Product Images

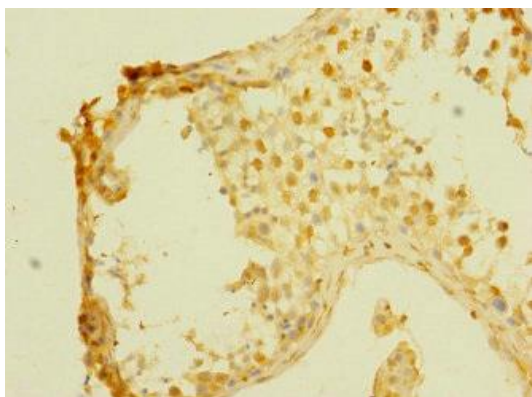
---



Western blot. All lanes: MPP6 antibody at 3.58 $\mu$ g/ml. Lane 1: Mouse brain tissue. Lane 2: Mouse kidney tissue. Lane 3: HepG2 whole cell lysate. Lane 4: Hela whole cell lysate. Lane 5: A549 whole cell lysate. Secondary. Goat polyclonal to rabbit IgG at 1/10000 dilution. Predicted band size: 61 kDa. Observed band size: 61 kDa.



Immunohistochemistry of paraffin-embedded human pancreatic tissue using PACO45496 at dilution of 1:100.



Immunohistochemistry of paraffin-embedded human testis tissue using PACO45496 at dilution of 1:100.