

## Product Information

**Size:**

50ul

**Reactivity:**

Human

**Source:**

Rabbit

**Isotype:**

IgG

**Applications:**

ELISA, IHC

**Recommended dilutions:**

ELISA:1:2000-1:10000, IHC:1:20-1:200

**Protein Background:**

Acts as a transcriptional transactivator of TCEA1 elongation activity. Acts as a transcriptional transactivator of ELL and ELL2 elongation activities. Potent inducer of apoptosis in prostatic and non-prostatic cell lines. Inhibits prostate tumor growth in vivo.

**Gene ID:**

EAF2

**Uniprot**

Q96CJ1

**Synonyms:**

ELL-associated factor 2 (Testosterone-regulated apoptosis inducer and tumor suppressor protein), EAF2, TRAITS

**Immunogen:**

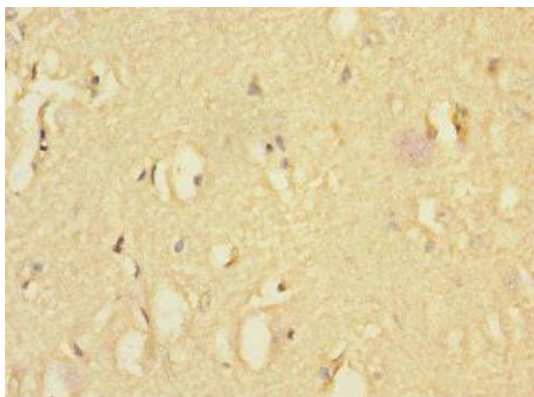
Recombinant Human ELL-associated factor 2 protein (1-170AA).

**Storage:**

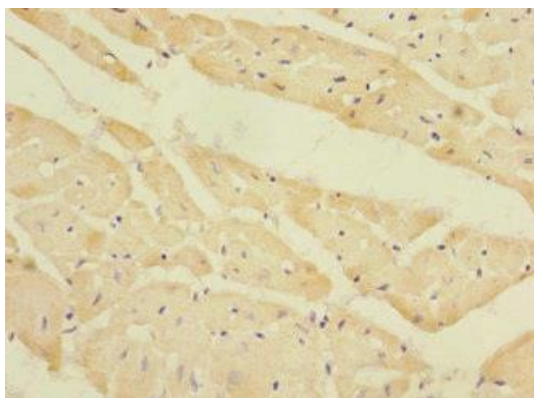
PBS with 0.02% sodium azide, 50% glycerol, pH7.3.

## Product Images

---



Immunohistochemistry of paraffin-embedded human brain tissue using PACO45498 at dilution of 1:100.



Immunohistochemistry of paraffin-embedded human heart tissue using PACO45498 at dilution of 1:100.