

PACO45500

Product Information

Size:

50ul

Reactivity:

Human, Mouse

Source:

Rabbit

Isotype:

IgG

Applications:

ELISA, WB, IHC

Recommended dilutions:

ELISA:1:2000-1:10000, WB:1:1000-1:5000,
IHC:1:20-1:200

Protein Background:

Drastically down-regulated in response to PDGF-BB or cell injury, that promote smooth muscle cell proliferation and dedifferentiation. Seems to play a role in the development of the embryonic vascular system.

Gene ID:

CSRP2

Uniprot

Q16527

Synonyms:

Cysteine and glycine-rich protein 2 (Cysteine-rich protein 2) (CRP2) (LIM domain only protein 5) (LMO-5) (Smooth muscle cell LIM protein) (SmLIM), CSRP2, LMO5 SMLIM

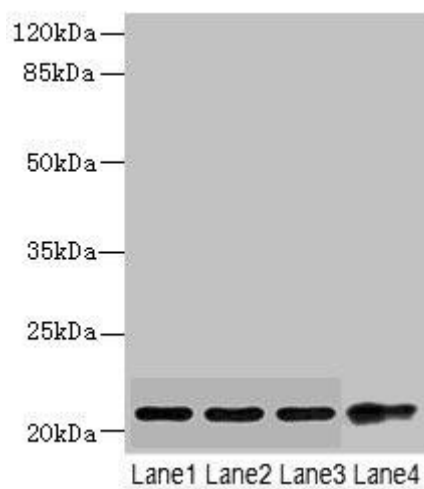
Immunogen:

Recombinant Human Cysteine and glycine-rich protein 2 protein (1-193AA).

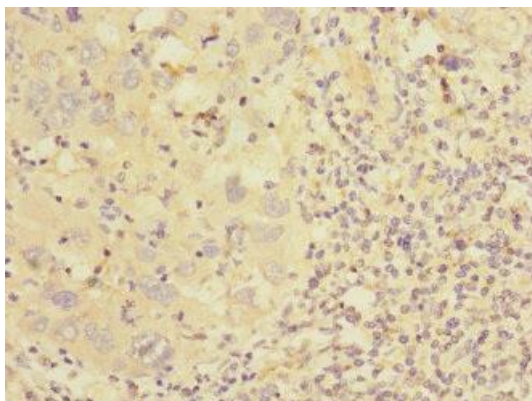
Storage:

PBS with 0.02% sodium azide, 50% glycerol, pH7.3.

Product Images



Western blot. All lanes: CSRP2 antibody at 5.74 μ g/ml. Lane 1: Mouse lung tissue. Lane 2: A375 whole cell lysate. Lane 3: A549 whole cell lysate. Lane 4: HepG2 whole cell lysate. Secondary. Goat polyclonal to rabbit IgG at 1/10000 dilution. Predicted band size: 21 kDa. Observed band size: 21 kDa.



Immunohistochemistry of paraffin-embedded human liver cancer using PACO45500 at dilution of 1:100.