

PACO45512

Product Information

Size:

50ul

Reactivity:

Human

Source:

Rabbit

Isotype:

IgG

Applications:

ELISA, IHC

Recommended dilutions:

ELISA:1:2000-1:10000, IHC:1:20-1:200

Protein Background:

Protein phosphatase involved in the inactivation of MAP kinases. Has a specificity for the MAPK11/MAPK12/MAPK13/MAPK14 subfamily. It preferably dephosphorylates p38.

Gene ID:

DUSP10

Uniprot

Q9Y6W6

Synonyms:

Dual specificity protein phosphatase 10 (EC 3.1.3.16) (EC 3.1.3.48) (Mitogen-activated protein kinase phosphatase 5) (MAP kinase phosphatase 5) (MKP-5), DUSP10, MKP5

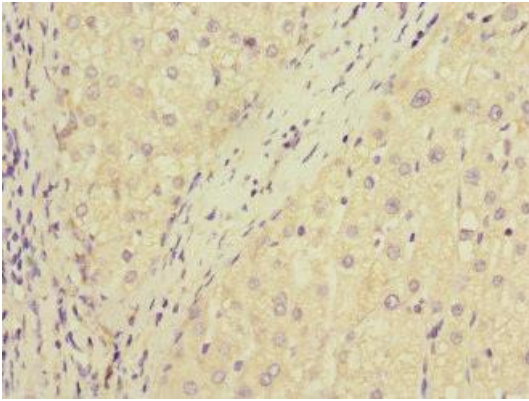
Immunogen:

Recombinant Human Dual specificity protein phosphatase 10 protein (1-300AA).

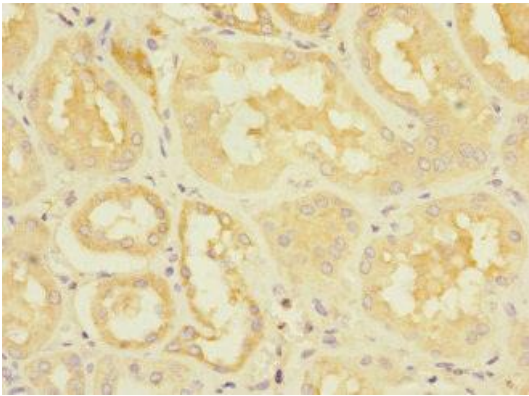
Storage:

PBS with 0.02% sodium azide, 50% glycerol, pH7.3.

Product Images



Immunohistochemistry of paraffin-embedded human liver cancer using PACO45512 at dilution of 1:100.



Immunohistochemistry of paraffin-embedded human kidney tissue using PACO45512 at dilution of 1:100.