

PACO45529

---

## Product Information

**Size:**

50ul

**Reactivity:**

Human

**Source:**

Rabbit

**Isotype:**

IgG

**Applications:**

ELISA, IHC

**Recommended dilutions:**

ELISA:1:2000-1:10000, IHC:1:20-1:200

**Protein Background:**

Plays important roles in controlling the metabolism of fatty acid, at different levels. Acts as a magnesium-dependent phosphatidate phosphatase enzyme which catalyzes the conversion of phosphatidic acid, to diacylglycerol during triglyceride, phosphatidylcholine and phosphatidylethanolamine biosynthesis in the reticulum endoplasmic membrane. Acts also as a nuclear transcriptional coactivator for PPARGC1A/PPARA to modulate lipid metabolism gene expression. Is involved in adipocyte differentiation. May also be involved in mitochondrial fission by converting phosphatidic acid, to diacylglycerol.

**Gene ID:**

LPIN1

**Uniprot**

Q14693

**Synonyms:**

Phosphatidate phosphatase LPIN1 (EC 3.1.3.4) (Lipin-1), LPIN1, KIAA0188

**Immunogen:**

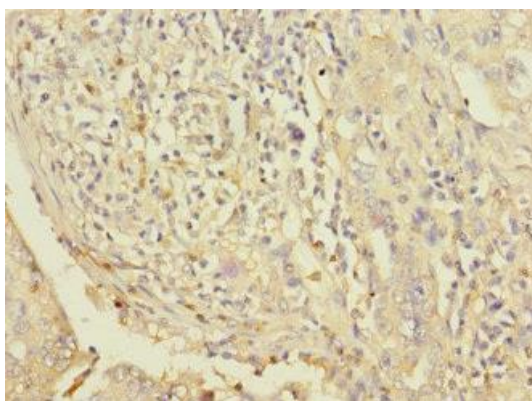
Recombinant Human Phosphatidate phosphatase LPIN1 protein (741-890AA).

**Storage:**

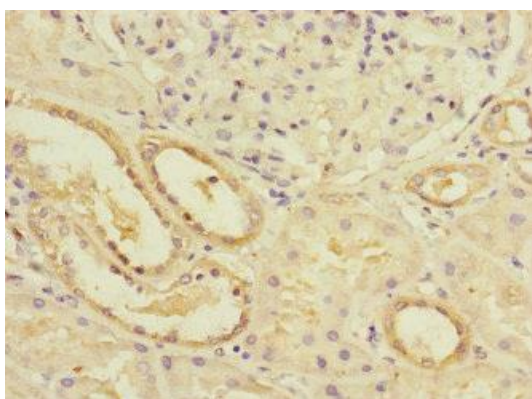
PBS with 0.02% sodium azide, 50% glycerol, pH7.3.

## Product Images

---



Immunohistochemistry of paraffin-embedded human lung cancer using PACO45529 at dilution of 1:100.



Immunohistochemistry of paraffin-embedded human kidney tissue using PACO45529 at dilution of 1:100.