

# MYBL1 Antibody



PACO45530

---

## Product Information

**Size:**

50ul

**Reactivity:**

Human

**Source:**

Rabbit

**Isotype:**

IgG

**Applications:**

ELISA, IHC

**Recommended dilutions:**

ELISA:1:2000-1:10000, IHC:1:20-1:200

**Protein Background:**

Strong transcriptional activator; DNA-binding protein that specifically recognize the sequence 5'-YAAC[GT]G-3'. Could have a role in the proliferation and/or differentiation of neurogenic, spermatogenic and B-lymphoid cells.

**Gene ID:**

MYBL1

**Uniprot**

P10243

**Synonyms:**

Myb-related protein A (A-Myb) (Myb-like protein 1), MYBL1, AMYB

**Immunogen:**

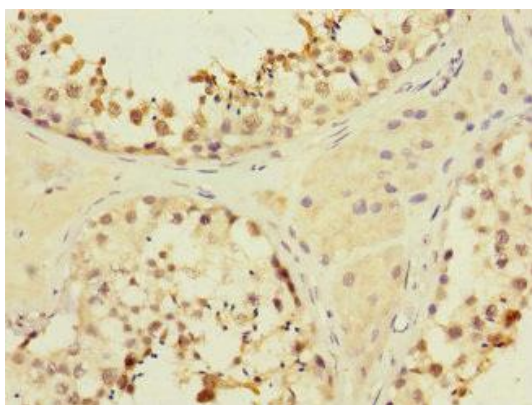
Recombinant Human Myb-related protein A protein (503-752AA).

**Storage:**

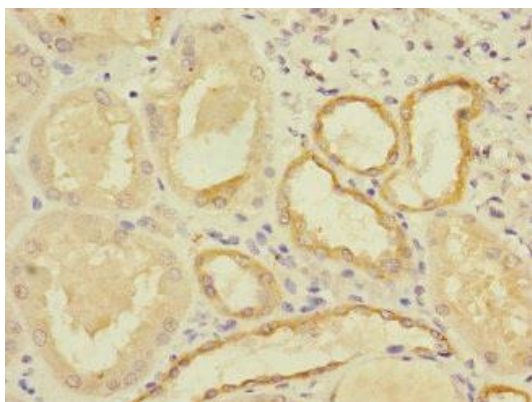
PBS with 0.02% sodium azide, 50% glycerol, pH7.3.

## Product Images

---



Immunohistochemistry of paraffin-embedded human testis tissue using PACO45530 at dilution of 1:100.



Immunohistochemistry of paraffin-embedded human kidney tissue using PACO45530 at dilution of 1:100.