

# PLAA Antibody



PACO45531

---

## Product Information

**Size:**

50ul

**Reactivity:**

Human

**Source:**

Rabbit

**Isotype:**

IgG

**Applications:**

ELISA, IHC

**Recommended dilutions:**

ELISA:1:2000-1:10000, IHC:1:20-1:200

**Protein Background:**

Involved in the maintenance of ubiquitin levels.

**Gene ID:**

PLAA

**Uniprot**

Q9Y263

**Synonyms:**

Phospholipase A-2-activating protein (PLA2P) (PLAP), PLAA, PLAP

**Immunogen:**

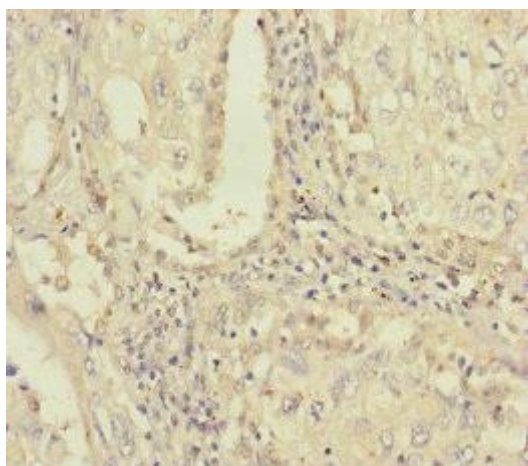
Recombinant Human Phospholipase A-2-activating protein (536-795AA).

**Storage:**

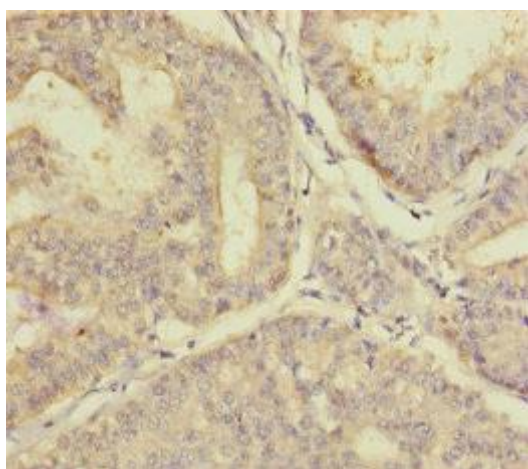
PBS with 0.02% sodium azide, 50% glycerol, pH7.3.

## Product Images

---



Immunohistochemistry of paraffin-embedded human lung cancer using PACO45531 at dilution of 1:100.



Immunohistochemistry of paraffin-embedded human endometrial cancer using PACO45531 at dilution of 1:100.