

PACO45544

---

## Product Information

**Size:**

50ul

**Reactivity:**

Human

**Source:**

Rabbit

**Isotype:**

IgG

**Applications:**

ELISA, IHC

**Recommended dilutions:**

ELISA:1:2000-1:10000, IHC:1:20-1:200

**Protein Background:**

Allows the formation of correctly charged Gln-tRNA(Gln) through the transamidation of misacylated Glu-tRNA(Gln) in the mitochondria. The reaction takes place in the presence of glutamine and ATP through an activated gamma-phospho-Glu-tRNA(Gln).

**Gene ID:**

GATC

**Uniprot**

O43716

**Synonyms:**

Glutamyl-tRNA(Gln) amidotransferase subunit C, mitochondrial (Glu-AdT subunit C) (EC 6.3.5. -) (Protein 15E1.2), GATC, 15E1.2

**Immunogen:**

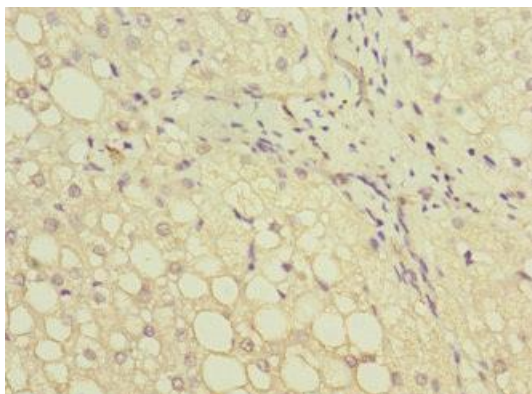
Recombinant Human Glutamyl-tRNA(Gln) amidotransferase subunit C, mitochondrial protein (1-136AA).

**Storage:**

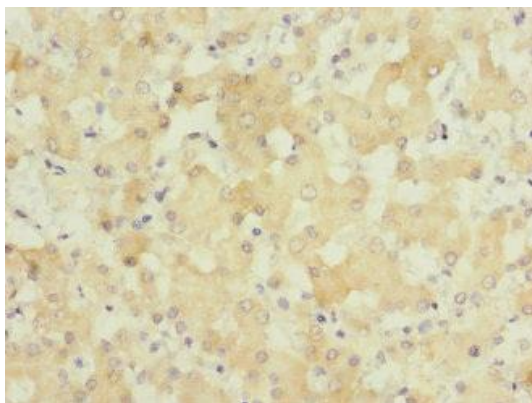
PBS with 0.02% sodium azide, 50% glycerol, pH7.3.

## Product Images

---



Immunohistochemistry of paraffin-embedded human liver tissue using PACO45544 at dilution of 1:100.



Immunohistochemistry of paraffin-embedded human liver cancer using PACO45544 at dilution of 1:100.