

IMMP2L Antibody



PACO45546

Product Information

Size:

50ul

Reactivity:

Human

Source:

Rabbit

Isotype:

IgG

Applications:

ELISA, IHC

Recommended dilutions:

ELISA:1:2000-1:10000, IHC:1:20-1:200

Protein Background:

Catalyzes the removal of transit peptides required for the targeting of proteins from the mitochondrial matrix, across the inner membrane, into the inter-membrane space. Known to process the nuclear encoded protein DIABLO.

Gene ID:

IMMP2L

Uniprot

Q96T52

Synonyms:

Mitochondrial inner membrane protease subunit 2 (EC 3.4.21. -) (IMP2-like protein), IMMP2L

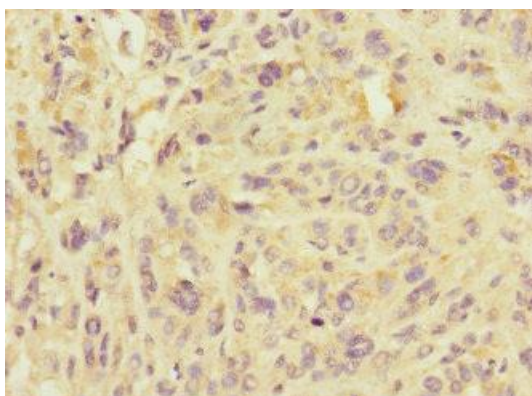
Immunogen:

Recombinant Human Mitochondrial inner membrane protease subunit 2 protein (1-100AA).

Storage:

PBS with 0.02% sodium azide, 50% glycerol, pH7.3.

Product Images



Immunohistochemistry of paraffin-embedded human melanoma using PACO45546 at dilution of 1:100.