

PACO45565

---

## Product Information

**Size:**

50ul

**Reactivity:**

Human

**Source:**

Rabbit

**Isotype:**

IgG

**Applications:**

ELISA, WB, IHC, IP, IF

**Recommended dilutions:**

ELISA:1:2000-1:10000, WB:1:1000-1:5000,  
IHC:1:20-1:200, IP:1:200-1:2000, IF:1:50-  
1:200,

**Protein Background:**

Acts as a sulfur carrier required for molybdopterin biosynthesis. Component of the molybdopterin synthase complex that catalyzes the conversion of precursor Z into molybdopterin by mediating the incorporation of 2 sulfur atoms into precursor Z to generate a dithiolene group. In the complex, serves as sulfur donor by being thiocarboxylated (-COSH) at its C-terminus by MOCS3. After interaction with MOCS2B, the sulfur is then transferred to precursor Z to form molybdopterin.

**Gene ID:**

MOCS2

**Uniprot**

O96007

**Synonyms:**

Molybdopterin synthase catalytic subunit (EC 2.8.1.12) (MOCO1-B) (Molybdenum cofactor synthesis protein 2 large subunit) (Molybdenum cofactor synthesis protein 2B) (MOCS2B) (Molybdopterin-synthase large subunit) (MPT synthase large subunit), MOCS2, MCBPE MOCO1

**Immunogen:**

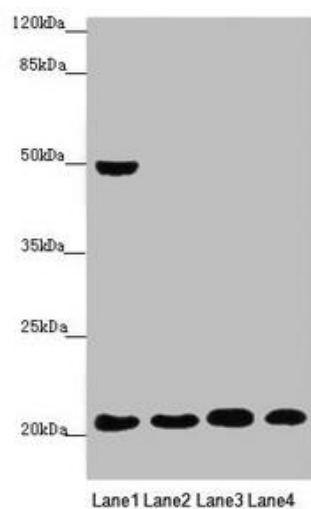
Recombinant Human Molybdopterin synthase catalytic subunit protein (1-188AA).

**Storage:**

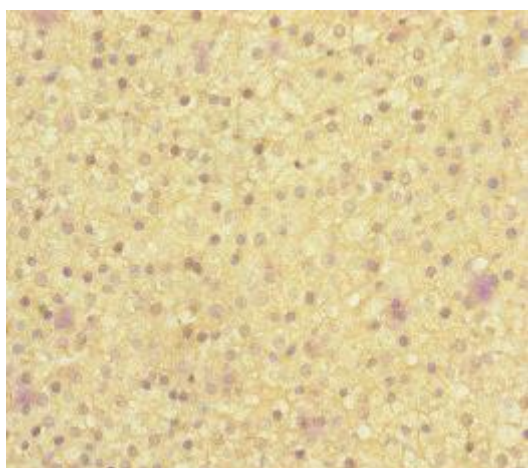
PBS with 0.02% sodium azide, 50% glycerol, pH7.3.

## Product Images

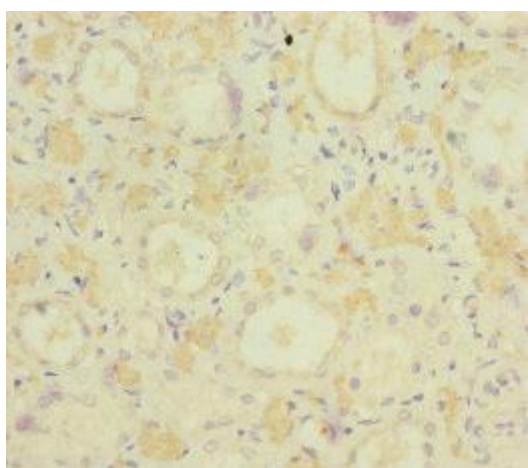
---



Western blot. All lanes: MOCS2 antibody at 0.47  $\mu$ g/ml. Lane 1: A549 whole cell lysate. Lane 2: HepG2 whole cell lysate. Lane 3: Jurkat whole cell lysate. Lane 4: HeLa whole cell lysate. Secondary: Goat polyclonal to rabbit IgG at 1/10000 dilution. Predicted band size: 21 kDa. Observed band size: 21, 49 kDa.



Immunohistochemistry of paraffin-embedded human adrenal gland tissue using PACO45565 at dilution of 1:100.



Immunohistochemistry of paraffin-embedded human kidney tissue using PACO45565 at dilution of 1:100.