

SH3GL3 Antibody



PACO45577

Product Information

Size:

50ul

Reactivity:

Human

Source:

Rabbit

Isotype:

IgG

Applications:

ELISA, IHC

Recommended dilutions:

ELISA:1:2000-1:10000, IHC:1:20-1:200

Protein Background:

Implicated in endocytosis. May recruit other proteins to membranes with high curvature.

Gene ID:

SH3GL3

Uniprot

Q99963

Synonyms:

Endophilin-A3 (EEN-B2) (Endophilin-3) (SH3 domain protein 2C) (SH3 domain-containing GRB2-like protein 3), SH3GL3, CNSA3 SH3D2C

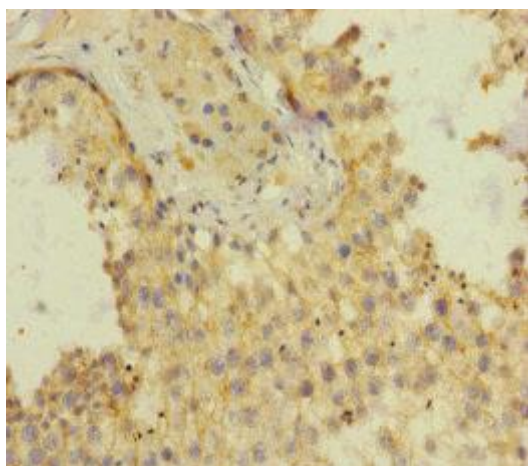
Immunogen:

Recombinant Human Endophilin-A3 protein (1-270AA).

Storage:

PBS with 0.02% sodium azide, 50% glycerol, pH7.3.

Product Images



Immunohistochemistry of paraffin-embedded human testis tissue using PACO45577 at dilution of 1:100.