

KLHL26 Antibody



PACO45586

Product Information

Size:

50ul

Reactivity:

Human

Source:

Rabbit

Isotype:

IgG

Applications:

ELISA, IHC

Recommended dilutions:

ELISA:1:2000-1:10000, IHC:1:20-1:200

Protein Background:

Cul3-RING ubiquitin ligase complex.

Gene ID:

KLHL26

Uniprot

Q53HC5

Synonyms:

Kelch-like protein 26, KLHL26

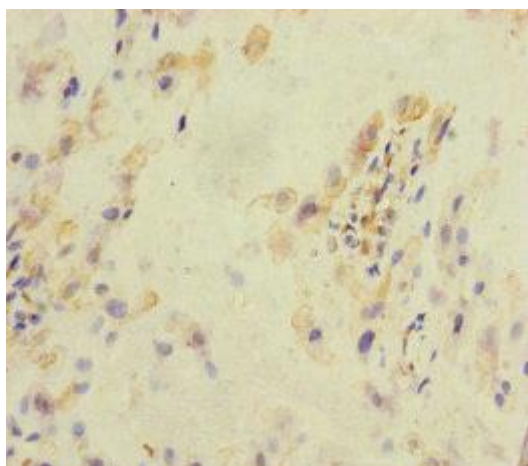
Immunogen:

Recombinant Human Kelch-like protein 26 protein (366-615AA).

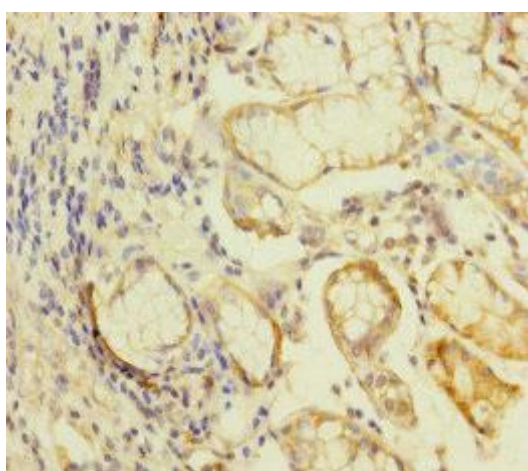
Storage:

PBS with 0.02% sodium azide, 50% glycerol, pH7.3.

Product Images



Immunohistochemistry of paraffin-embedded human placenta tissue using PACO45586 at dilution of 1:100.



Immunohistochemistry of paraffin-embedded human gastric cancer using PACO45586 at dilution of 1:100.