

SLC6A12 Antibody



PACO45587

Product Information

Size:

50ul

Reactivity:

Human

Source:

Rabbit

Isotype:

IgG

Applications:

ELISA, WB, IHC

Recommended dilutions:

ELISA:1:2000-1:10000, WB:1:1000-1:5000,
IHC:1:20-1:200

Protein Background:

Transports betaine and GABA. May have a role in regulation of GABAergic transmission in the brain through the reuptake of GABA into presynaptic terminals, as well as in osmotic regulation.

Gene ID:

SLC6A12

Uniprot

P48065

Synonyms:

Sodium- and chloride-dependent betaine transporter (BGT-1) (Na(+)/Cl(-) betaine/GABA transporter) (Solute carrier family 6 member 12), SLC6A12

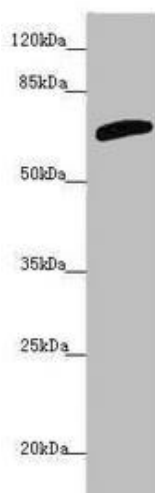
Immunogen:

Recombinant Human Sodium- and chloride-dependent betaine transporter protein (515-614AA).

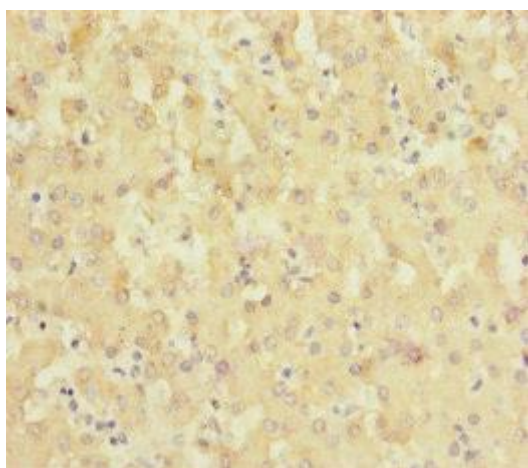
Storage:

PBS with 0.02% sodium azide, 50% glycerol, pH7.3.

Product Images



Western blot. All lanes: SLC6A12 antibody at 4.47 μ g/ml + PC-3 whole cell lysate. Secondary. Goat polyclonal to rabbit IgG at 1/10000 dilution. Predicted band size: 70 kDa. Observed band size: 70 kDa.



Immunohistochemistry of paraffin-embedded human liver tissue using PACO45587 at dilution of 1:100.