

ECHS1 Antibody



PACO45595

Product Information

Size:

50ul

Reactivity:

Human, Mouse

Source:

Rabbit

Isotype:

IgG

Applications:

ELISA, WB, IHC

Recommended dilutions:

ELISA:1:2000-1:10000, WB:1:1000-1:5000,
IHC:1:20-1:200

Protein Background:

Straight-chain enoyl-CoA thioesters from C4 up to at least C16 are processed, although with decreasing catalytic rate.

Gene ID:

ECHS1

Uniprot

P30084

Synonyms:

Enoyl-CoA hydratase, mitochondrial (EC 4.2.1.17) (Enoyl-CoA hydratase 1) (Short-chain enoyl-CoA hydratase) (SCEH), ECHS1

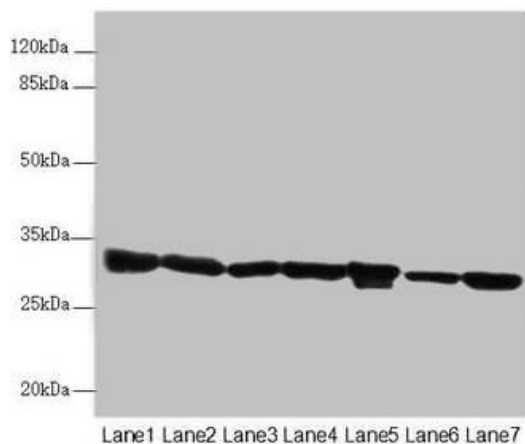
Immunogen:

Recombinant Human Enoyl-CoA hydratase, mitochondrial protein (28-290AA).

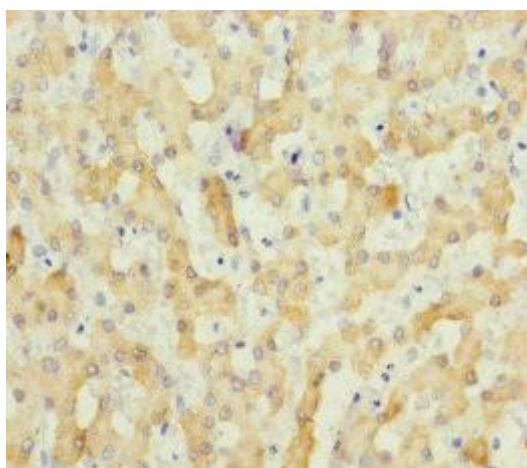
Storage:

PBS with 0.02% sodium azide, 50% glycerol, pH7.3.

Product Images



Western blot. All lanes: ECHS1 antibody at 3.03 μ g/ml. Lane 1: Mouse liver tissue. Lane 2: Mouse skeletal muscle tissue. Lane 3: Hela whole cell lysate. Lane 4: HepG2 whole cell lysate. Lane 5: MCF-7 whole cell lysate. Lane 6: Jurkat whole cell lysate. Lane 7: A549 whole cell lysate. Secondary: Goat polyclonal to rabbit IgG at 1/10000 dilution. Predicted band size: 32 kDa. Observed band size: 32 kDa.



Immunohistochemistry of paraffin-embedded human liver tissue using PACO45595 at dilution of 1:100.