

# MAGOH Antibody



PACO45603

---

## Product Information

**Size:**

50ul

**Reactivity:**

Human, Mouse

**Source:**

Rabbit

**Isotype:**

IgG

**Applications:**

ELISA, WB, IHC, IP

**Recommended dilutions:**

ELISA:1:2000-1:10000, WB:1:1000-1:5000,  
IHC:1:20-1:200, IP:1:200-1:2000

**Protein Background:**

**Gene ID:**

MAGOH

**Uniprot**

P61326

**Synonyms:**

Protein mago nashi homolog, MAGOH, MAGOHA

**Immunogen:**

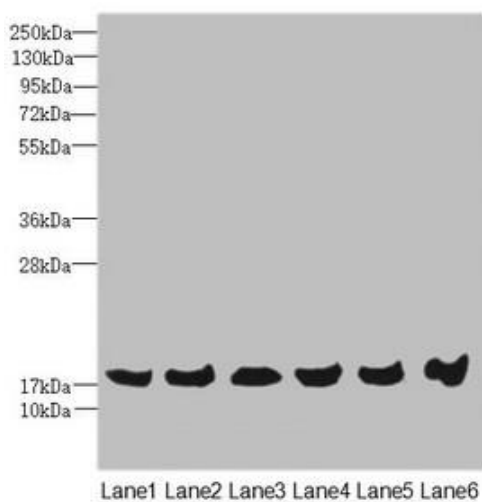
Recombinant Human Protein mago nashi homolog protein (1-146AA).

**Storage:**

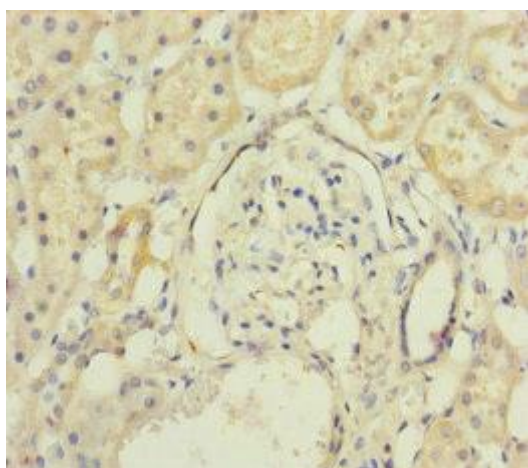
PBS with 0.02% sodium azide, 50% glycerol, pH7.3.

## Product Images

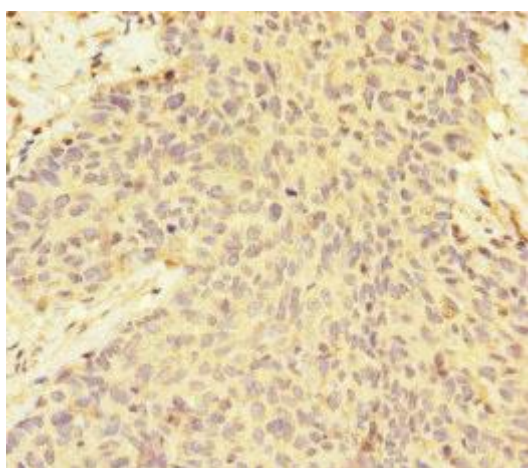
---



Western blot. All lanes: MAGOH antibody at 4.69 $\mu$ g/ml. Lane 1: Mouse kidney tissue. Lane 2: A431 whole cell lysate. Lane 3: Jurkat whole cell lysate. Lane 4: Raji whole cell lysate. Lane 5: K562 whole cell lysate. Lane 6: Hela whole cell lysate. Secondary. Goat polyclonal to rabbit IgG at 1/10000 dilution. Predicted band size: 18, 13 kDa. Observed band size: 18 kDa.



Immunohistochemistry of paraffin-embedded human kidney tissue using PACO45603 at dilution of 1:100.



Immunohistochemistry of paraffin-embedded human ovarian cancer using PACO45603 at dilution of 1:100.