

MAGOH Antibody



PACO45604

Product Information

Size:

50ul

Reactivity:

Human, Mouse

Source:

Rabbit

Isotype:

IgG

Applications:

ELISA, WB, IP

Recommended dilutions:

ELISA:1:2000-1:10000, WB:1:1000-1:5000,
IP:1:200-1:2000

Protein Background:

Gene ID:

MAGOH

Uniprot

P61326

Synonyms:

Protein mago nashi homolog, MAGOH, MAGOHA

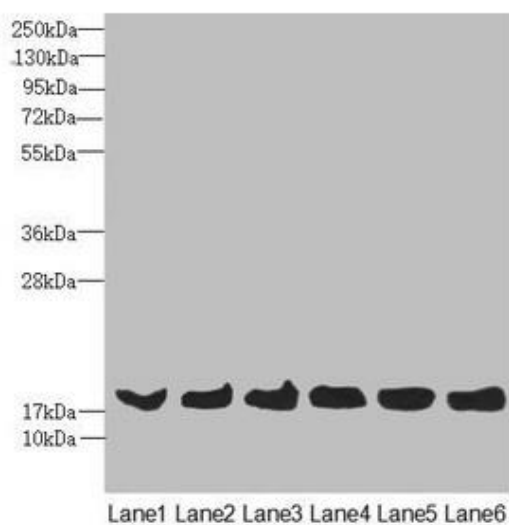
Immunogen:

Recombinant Human Protein mago nashi homolog protein (1-146AA).

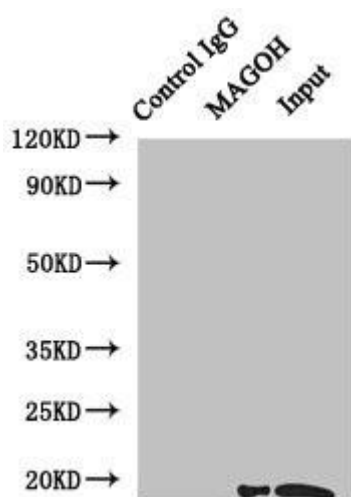
Storage:

PBS with 0.02% sodium azide, 50% glycerol, pH7.3.

Product Images



Western blot. All lanes: MAGOH antibody at 4.36 μ g/ml. Lane 1: Mouse kidney tissue. Lane 2: A431 whole cell lysate. Lane 3: Jurkat whole cell lysate. Lane 4: Raji whole cell lysate. Lane 5: K562 whole cell lysate. Lane 6: Hela whole cell lysate. Secondary: Goat polyclonal to rabbit IgG at 1/10000 dilution. Predicted band size: 18, 13 kDa. Observed band size: 18 kDa.



Immunoprecipitating MAGOH in HeLa whole cell lysate. Lane 1: Rabbit control IgG instead of (1 μ g) instead of PACO45604 in HeLa whole cell lysate. For western blotting, a HRP-conjugated anti-rabbit IgG, specific to the non-reduced form of IgG was used as the Secondary antibody (1/50000). Lane 2: PACO45604 (4 μ g) + HeLa whole cell lysate (500 μ g). Lane 3: HeLa whole cell lysate (20 μ g).