

# RAB27B Antibody



PACO45615

---

## Product Information

**Size:**

50ul

**Reactivity:**

Human

**Source:**

Rabbit

**Isotype:**

IgG

**Applications:**

ELISA, IHC

**Recommended dilutions:**

ELISA:1:2000-1:10000, IHC:1:20-1:200

**Protein Background:**

May be involved in targeting uroplakins to urothelial apical membranes.

**Gene ID:**

RAB27B

**Uniprot**

O00194

**Synonyms:**

Ras-related protein Rab-27B (C25KG), RAB27B

**Immunogen:**

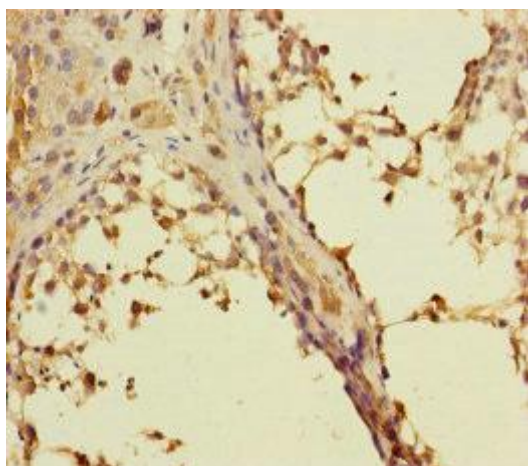
Recombinant Human Ras-related protein Rab-27B protein (1-218AA).

**Storage:**

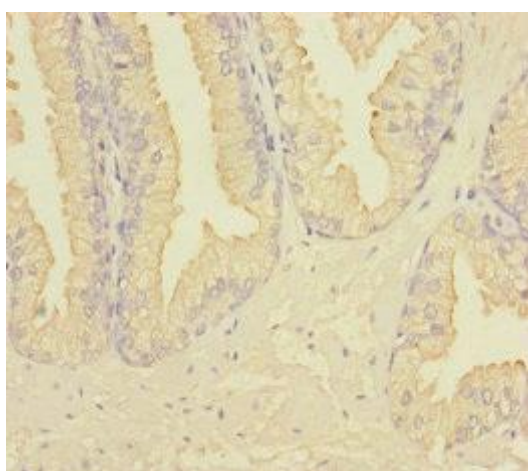
PBS with 0.02% sodium azide, 50% glycerol, pH7.3.

## Product Images

---



Immunohistochemistry of paraffin-embedded human testis tissue using PACO45615 at dilution of 1:100.



Immunohistochemistry of paraffin-embedded human prostate cancer using PACO45615 at dilution of 1:100.