

# SLC39A7 Antibody



PACO45627

---

## Product Information

**Size:**

50ul

**Reactivity:**

Human

**Source:**

Rabbit

**Isotype:**

IgG

**Applications:**

ELISA, WB, IHC

**Recommended dilutions:**

ELISA:1:2000-1:10000, WB:1:1000-1:5000,  
IHC:1:20-1:200

**Protein Background:**

Zinc transporter, that transports Zn(2+) from the endoplasmic reticulum/Golgi apparatus to the cytosol. Transport is stimulated by growth factors, such as EGF, and Ca(2+), as well as by exogenous Zn(2+).

**Gene ID:**

SLC39A7

**Uniprot**

Q92504

**Synonyms:**

Zinc transporter SLC39A7 (Histidine-rich membrane protein Ke4) (Really interesting new gene 5 protein) (Solute carrier family 39 member 7) (Zrt-, Irt-like protein 7) (ZIP7), SLC39A7, HKE4 RING5

**Immunogen:**

Recombinant Human Zinc transporter SLC39A7 protein (235-380AA).

**Storage:**

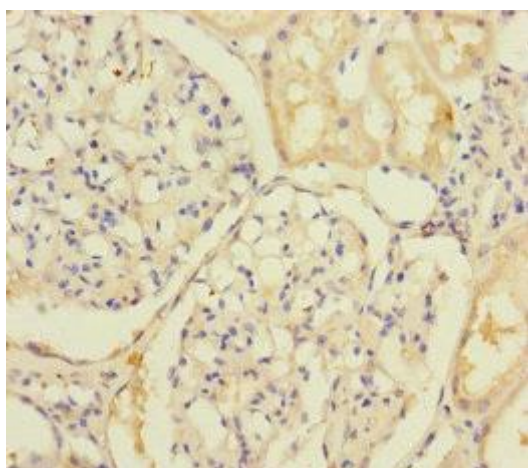
PBS with 0.02% sodium azide, 50% glycerol, pH7.3.

## Product Images

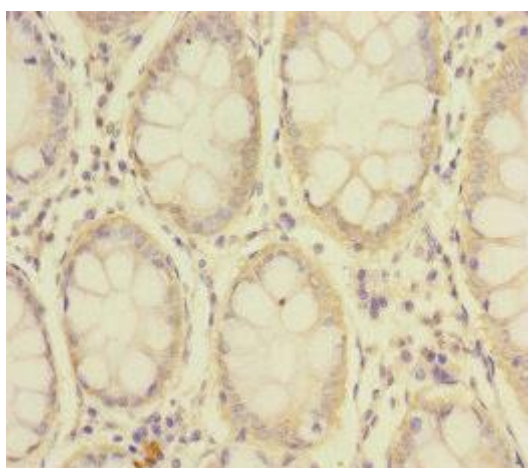
---



Western blot. All lanes: SLC39A7 antibody at 4.06 $\mu$ g/ml. Lane 1: MCF-7 whole cell lysate. Lane 2: HepG2 whole cell lysate. Secondary: Goat polyclonal to rabbit IgG at 1/10000 dilution. Predicted band size: 51 kDa. Observed band size: 51 kDa.



Immunohistochemistry of paraffin-embedded human kidney tissue using PACO45627 at dilution of 1:100.



Immunohistochemistry of paraffin-embedded human colon cancer using PACO45627 at dilution of 1:100.