

SLC39A7 Antibody



PACO45628

Product Information

Size:

50ul

Reactivity:

Human

Source:

Rabbit

Isotype:

IgG

Applications:

ELISA, WB, IHC

Recommended dilutions:

ELISA:1:2000-1:10000, WB:1:1000-1:5000,
IHC:1:20-1:200

Protein Background:

Zinc transporter, that transports Zn(2+) from the endoplasmic reticulum/Golgi apparatus to the cytosol. Transport is stimulated by growth factors, such as EGF, and Ca(2+), as well as by exogenous Zn(2+).

Gene ID:

SLC39A7

Uniprot

Q92504

Synonyms:

Zinc transporter SLC39A7 (Histidine-rich membrane protein Ke4) (Really interesting new gene 5 protein) (Solute carrier family 39 member 7) (Zrt-, Irt-like protein 7) (ZIP7), SLC39A7, HKE4 RING5

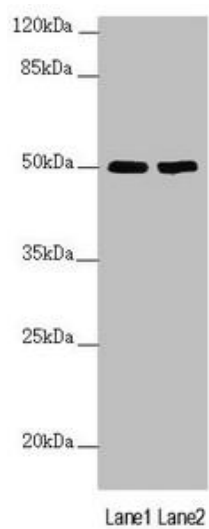
Immunogen:

Recombinant Human Zinc transporter SLC39A7 protein (235-380AA).

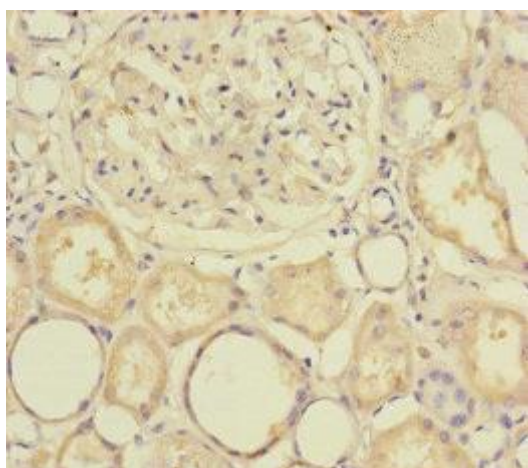
Storage:

PBS with 0.02% sodium azide, 50% glycerol, pH7.3.

Product Images



Western blot. All lanes: SLC39A7 antibody at 3.59 μ g/ml. Lane 1: MCF-7 whole cell lysate. Lane 2: HepG2 whole cell lysate. Secondary. Goat polyclonal to rabbit IgG at 1/10000 dilution. Predicted band size: 51 kDa. Observed band size: 51 kDa.



Immunohistochemistry of paraffin-embedded human kidney tissue using PACO45628 at dilution of 1:100.