

XPO6 Antibody



PACO45636

Product Information

Size:

50ul

Reactivity:

Human

Source:

Rabbit

Isotype:

IgG

Applications:

ELISA, IHC

Recommended dilutions:

ELISA:1:2000-1:10000, IHC:1:20-1:200

Protein Background:

Mediates the nuclear export of actin and profilin-actin complexes in somatic cells.

Gene ID:

XPO6

Uniprot

Q96QU8

Synonyms:

Exportin-6 (Exp6) (Ran-binding protein 20), XPO6, KIAA0370 RANBP20

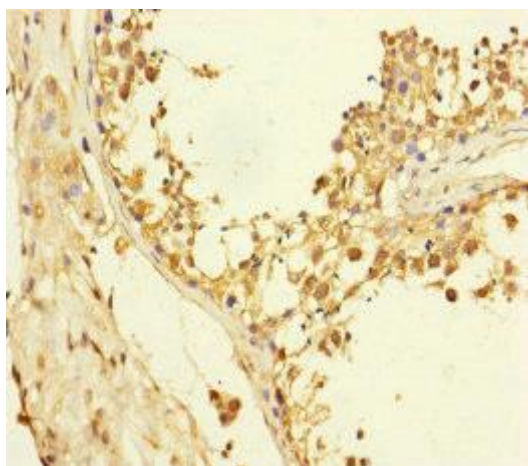
Immunogen:

Recombinant Human Exportin-6 protein (290-530AA).

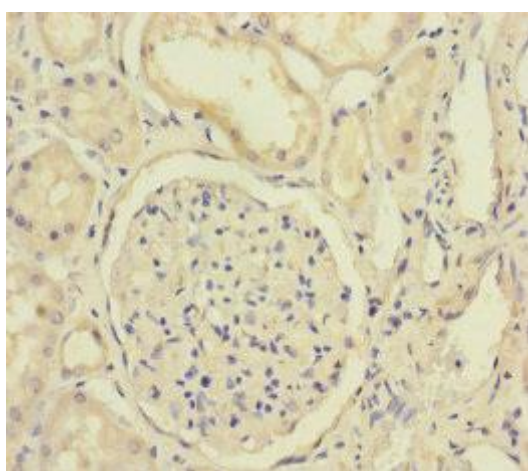
Storage:

PBS with 0.02% sodium azide, 50% glycerol, pH7.3.

Product Images



Immunohistochemistry of paraffin-embedded human testis tissue using PACO45636 at dilution of 1:100.



Immunohistochemistry of paraffin-embedded human kidney tissue using PACO45636 at dilution of 1:100.