

## Product Information

**Size:**

50ul

**Reactivity:**

Human

**Source:**

Rabbit

**Isotype:**

IgG

**Applications:**

ELISA, WB

**Recommended dilutions:**

ELISA:1:2000-1:10000, WB:1:1000-1:5000

**Protein Background:**

The JNK-interacting protein (JIP) group of scaffold proteins selectively mediates JNK signaling by aggregating specific components of the MAPK cascade to form a functional JNK signaling module. JIP2 inhibits IL1 beta-induced apoptosis in insulin-secreting cells. May function as a regulator of vesicle transport, through interactions with the JNK-signaling components and motor proteins.

**Gene ID:**

MAPK8IP2

**Uniprot**

Q13387

**Synonyms:**

C-Jun-amino-terminal kinase-interacting protein 2 (JIP-2) (JNK-interacting protein 2) (Islet-brain-2) (IB-2) (JNK MAP kinase scaffold protein 2) (Mitogen-activated protein kinase 8-interacting protein 2), MAPK8IP2, IB2 JIP2 PRKM8IPL

**Immunogen:**

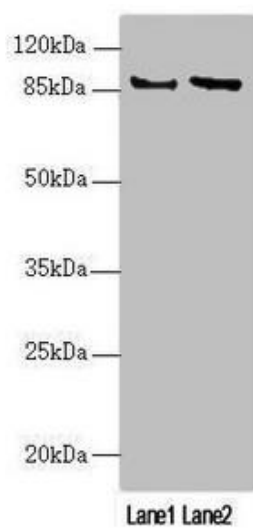
Recombinant Human C-Jun-amino-terminal kinase-interacting protein 2 protein (470-570AA).

**Storage:**

PBS with 0.02% sodium azide, 50% glycerol, pH7.3.

## Product Images

---



Western blot. All lanes: MAPK8IP2 antibody at 2.85µg/ml. Lane 1: U251 whole cell lysate. Lane 2: A549 whole cell lysate. Secondary. Goat polyclonal to rabbit IgG at 1/10000 dilution. Predicted band size: 88, 85, 65, 50 kDa. Observed band size: 88 kDa.