

# CPT1A Antibody



PACO45754

---

## Product Information

**Size:**

50ug

**Reactivity:**

Human, Mouse

**Source:**

Rabbit

**Isotype:**

IgG

**Applications:**

ELISA, WB, IHC

**Recommended dilutions:**

ELISA:1:2000-1:10000, WB:1:2000-1:5000,  
IHC:1:20-1:200

**Protein Background:**

Catalyzes the transfer of the acyl group of long-chain fatty acid, CoA conjugates onto carnitine, an essential step for the mitochondrial uptake of long-chain fatty acid, and their subsequent beta-oxidation in the mitochondrion. Plays an important role in triglyceride metabolism.

**Gene ID:**

CPT1A

**Uniprot**

P50416

**Synonyms:**

Carnitine O-palmitoyltransferase 1, liver isoform (CPT1-L) (EC 2.3.1.21) (Carnitine O-palmitoyltransferase I, liver isoform) (CPT I) (CPTI-L) (Carnitine palmitoyltransferase 1A), CPT1A, CPT1

**Immunogen:**

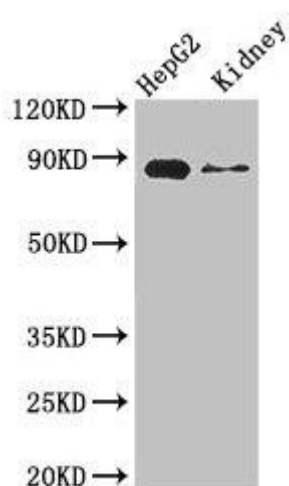
Recombinant Human Carnitine O-palmitoyltransferase 1, liver isoform protein (301-600AA).

**Storage:**

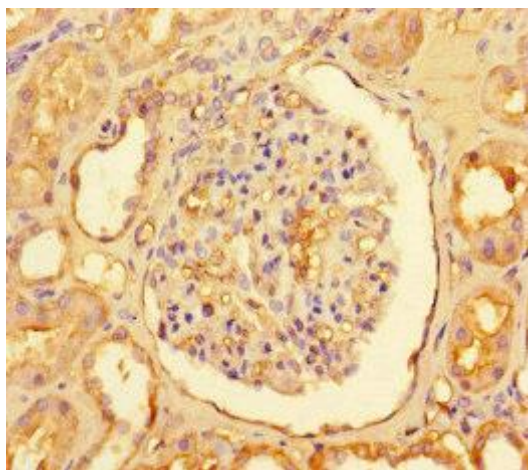
Preservative: 0.03% Proclin 300. Constituents: 50% Glycerol, 0.01M PBS, PH 7.4

## Product Images

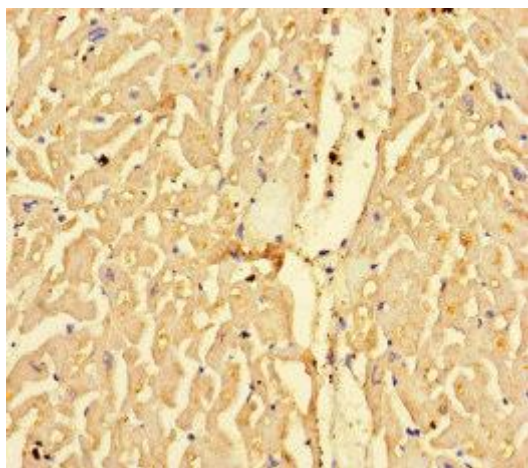
---



Western Blot. Positive WB detected in: HepG2 whole cell lysate, Mouse kidney tissue. All lanes: CPT1A antibody at 3.4 $\mu$ g/ml. Secondary. Goat polyclonal to rabbit IgG at 1/50000 dilution. Predicted band size: 89, 87 kDa. Observed band size: 89 kDa.



Immunohistochemistry of paraffin-embedded human kidney tissue using PACO45754 at dilution of 1:100.



Immunohistochemistry of paraffin-embedded human heart tissue using PACO45754 at dilution of 1:100.