

EPM2A Antibody



PACO45806

Product Information

Size:

50ug

Reactivity:

Human, Mouse

Source:

Rabbit

Isotype:

IgG

Applications:

ELISA, WB, IHC, IF

Recommended dilutions:

ELISA:1:2000-1:10000, WB:1:2000-1:5000,
IHC:1:20-1:200, IF:1:50-1:200

Protein Background:

negative regulation of TOR signaling, positive regulation of macroautophagy.

Gene ID:

EPM2A

Uniprot

B3EWF7

Synonyms:

Laforin, isoform 9, EPM2A

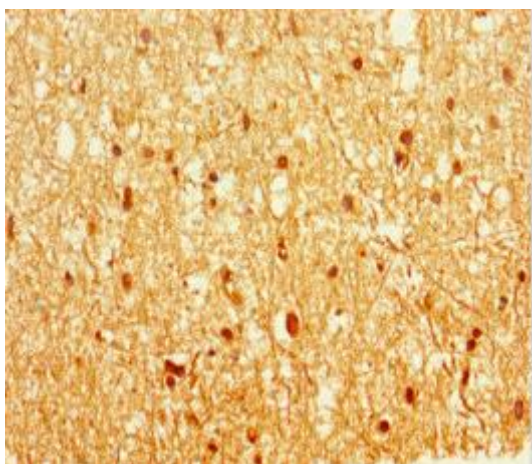
Immunogen:

Recombinant Human Laforin, isoform 9 protein (1-331AA).

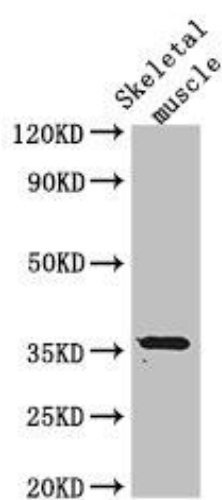
Storage:

Preservative: 0.03% Proclin 300. Constituents: 50% Glycerol, 0.01M PBS, PH 7.4

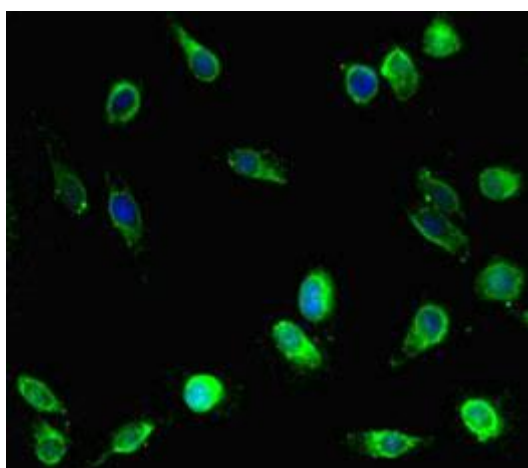
Product Images



Immunohistochemistry of paraffin-embedded human brain tissue using PACO45806 at dilution of 1:100.



Western Blot. Positive WB detected in: Mouse skeletal muscle tissue. All lanes: EPM2A antibody at 3 μ g/ml. Secondary. Goat polyclonal to rabbit IgG at 1/50000 dilution. Predicted band size: 36 kDa. Observed band size: 36 kDa.



Immunofluorescent analysis of HeLa cells using PACO45806 at dilution of 1:100 and Alexa Fluor 488-conjugated AffiniPure Goat Anti-Rabbit IgG(H+L).