

PACO45830

Product Information

Size:

50ug

Reactivity:

Human

Source:

Rabbit

Isotype:

IgG

Applications:

ELISA, WB, IF

Recommended dilutions:

ELISA:1:2000-1:10000, WB:1:1000-1:5000,
IF:1:50-1:200

Protein Background:

Type I receptor for TGF-beta family ligands BMP9/GDF2 and BMP10 and important regulator of normal blood vessel development. On ligand binding, forms a receptor complex consisting of two type II and two type I transmembrane serine/threonine kinases. Type II receptors phosphorylate and activate type I receptors which autophosphorylate, then bind and activate SMAD transcriptional regulators. May bind activin as well.

Gene ID:

ACVRL1

Uniprot

P37023

Synonyms:

Serine/threonine-protein kinase receptor R3 (SKR3) (EC 2.7.11.30) (Activin receptor-like kinase 1) (ALK-1) (TGF-B superfamily receptor type I) (TSR-I), ACVRL1, ACVRLK1 ALK1

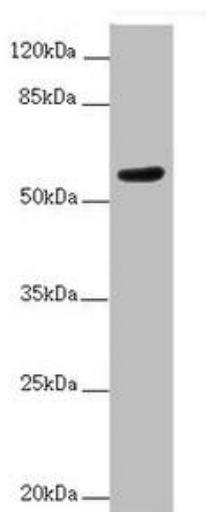
Immunogen:

Recombinant Human Serine/threonine-protein kinase receptor R3 protein (22-118AA).

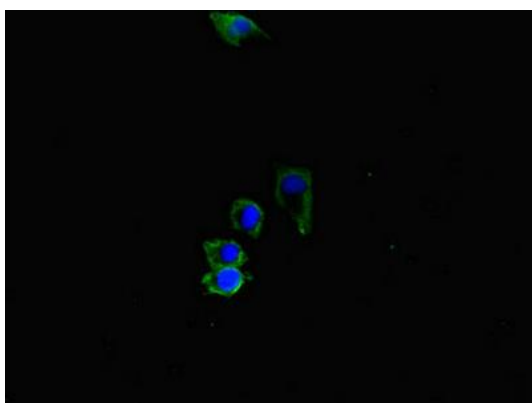
Storage:

Preservative: 0.03% Proclin 300. Constituents: 50% Glycerol, 0.01M PBS, PH 7.4

Product Images



Western blot. All lanes: ACVRL1 antibody at 2 μ g/ml + MCF-7 whole cell lysate. Secondary. Goat polyclonal to rabbit IgG at 1/10000 dilution. Predicted band size: 57 kDa. Observed band size: 57 kDa.



Immunofluorescent analysis of HepG2 cells using PACO45830 at dilution of 1:100 and Alexa Fluor 488-conjugated AffiniPure Goat Anti-Rabbit IgG(H+L).