

FCER1A Antibody



PACO45834

Product Information

Size:

50ug

Reactivity:

Human, Mouse

Source:

Rabbit

Isotype:

IgG

Applications:

ELISA, WB, IHC, IF

Recommended dilutions:

ELISA:1:2000-1:10000, WB:1:2000-1:5000,
IHC:1:20-1:200, IF:1:50-1:200

Protein Background:

Binds to the Fc region of immunoglobulins epsilon. High affinity receptor. Responsible for initiating the allergic response. Binding of allergen to receptor-bound IgE leads to cell activation and the release of mediators (such as histamine) responsible for the manifestations of allergy. The same receptor also induces the secretion of important lymphokines.

Gene ID:

FCER1A

Uniprot

P12319

Synonyms:

High affinity immunoglobulin epsilon receptor subunit alpha (Fc-epsilon RI-alpha) (FcERI) (IgE Fc receptor subunit alpha), FCER1A, FCE1A

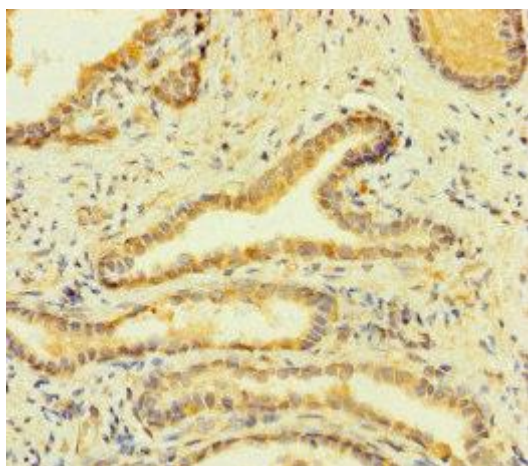
Immunogen:

Recombinant Human High affinity immunoglobulin epsilon receptor subunit α protein (26-205AA).

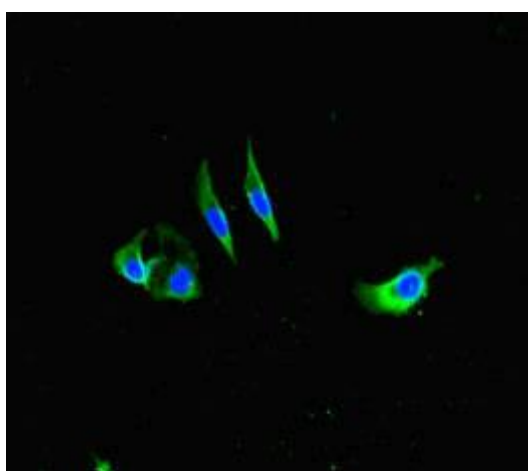
Storage:

Preservative: 0.03% Proclin 300. Constituents: 50% Glycerol, 0.01M PBS, PH 7.4

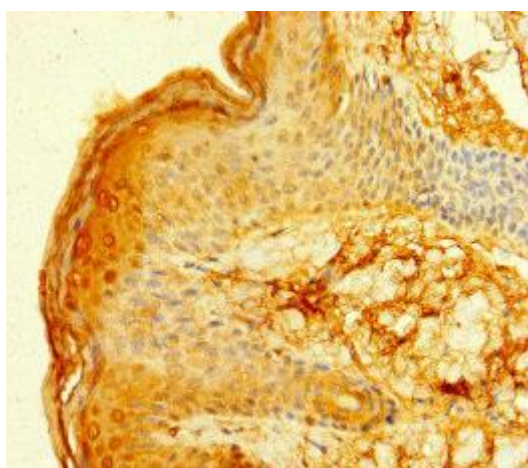
Product Images



Immunohistochemistry of paraffin-embedded human prostate cancer using PACO45834 at dilution of 1:100.



Immunofluorescent analysis of HeLa cells using PACO45834 at dilution of 1:100 and Alexa Fluor 488-conjugated AffiniPure Goat Anti-Rabbit IgG(H+L).



Immunohistochemistry of paraffin-embedded human skin tissue using PACO45834 at dilution of 1:100.