

Product Information

Size:

50ug

Reactivity:

Human

Source:

Rabbit

Isotype:

IgG

Applications:

ELISA, IHC, IF

Recommended dilutions:

ELISA:1:2000-1:10000, IHC:1:20-1:200,
IF:1:50-1:200

Protein Background:

Catalyzes the rate-limiting step of the oxidative pentose-phosphate pathway, which represents a route for the dissimilation of carbohydrates besides glycolysis. The main function of this enzyme is to provide reducing power (NADPH) and pentose phosphates for fatty acid, and nucleic acid, synthesis.

Gene ID:

G6PD

Uniprot

P11413

Synonyms:

Glucose-6-phosphate 1-dehydrogenase (G6PD) (EC 1.1.1.49), G6PD

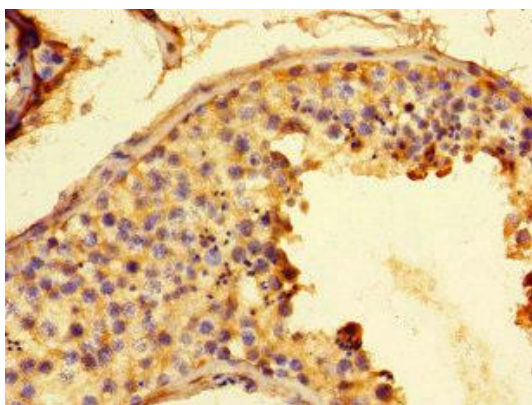
Immunogen:

Recombinant Human Glucose-6-phosphate 1-dehydrogenase protein (80-185AA).

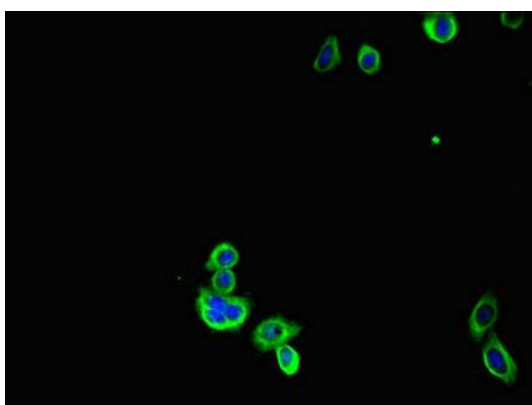
Storage:

Preservative: 0.03% Proclin 300. Constituents: 50% Glycerol, 0.01M PBS, PH 7.4

Product Images



Immunohistochemistry of paraffin-embedded human testis tissue using PACO45846 at dilution of 1:100.



Immunofluorescent analysis of HepG2 cells using PACO45846 at dilution of 1:100 and Alexa Fluor 488-conjugated AffiniPure Goat Anti-Rabbit IgG(H+L).