

# GATA1 Antibody



PACO45854

---

## Product Information

**Size:**

50ug

**Reactivity:**

Human

**Source:**

Rabbit

**Isotype:**

IgG

**Applications:**

ELISA, WB, IHC

**Recommended dilutions:**

ELISA:1:2000-1:10000, WB:1:1000-1:5000,  
IHC:1:20-1:200

**Protein Background:**

Transcriptional activator or repressor which probably serves as a general switch factor for erythroid development. It binds to DNA sites with the consensus sequence 5'-[AT]GATA[AG]-3' within regulatory regions of globin genes and of other genes expressed in erythroid cells. Activates the transcription of genes involved in erythroid differentiation of K562 erythroleukemia cells, including HBB, HBG1/2, ALAS2 and HMBS.

**Gene ID:**

GATA1

**Uniprot**

P15976

**Synonyms:**

Erythroid transcription factor (Eryf1) (GATA-binding factor 1) (GATA-1) (GF-1) (NF-E1 DNA-binding protein), GATA1, ERYF1 GF1

**Immunogen:**

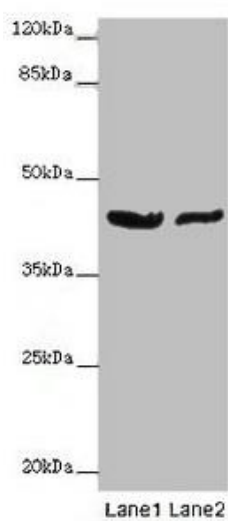
Recombinant Human Erythroid transcription factor protein (39-153AA).

**Storage:**

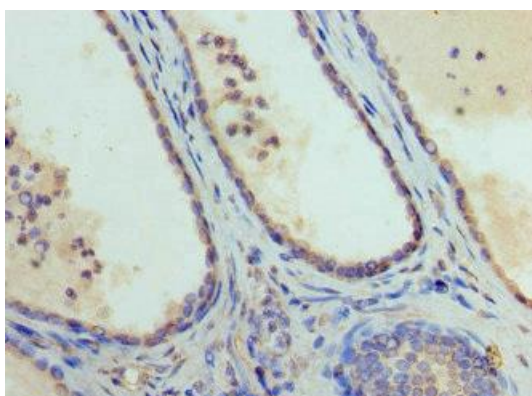
Preservative: 0.03% Proclin 300. Constituents: 50% Glycerol, 0.01M PBS, PH 7.4

## Product Images

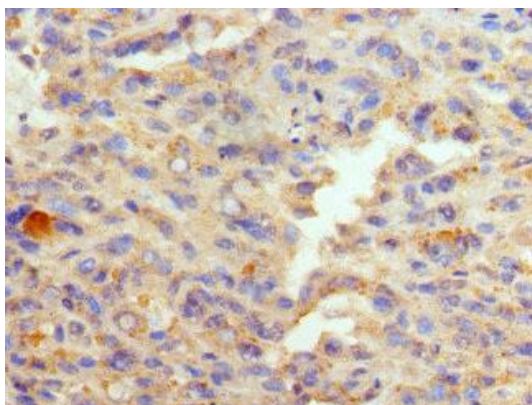
---



Western blot. All lanes: GATA1 antibody at 7 $\mu$ g/ml. Lane 1: MCF-7 whole cell lysate. Lane 2: A549 whole cell lysate. Secondary. Goat polyclonal to rabbit IgG at 1/10000 dilution. Predicted band size: 43, 36, 35 kDa. Observed band size: 43 kDa.



Immunohistochemistry of paraffin-embedded human prostate cancer using PACO45854 at dilution of 1:100.



Immunohistochemistry of paraffin-embedded human melanoma using PACO45854 at dilution of 1:100.