

Product Information

Size:

50ug

Reactivity:

Human

Source:

Rabbit

Isotype:

IgG

Applications:

ELISA, WB, IHC, IF

Recommended dilutions:

ELISA:1:2000-1:10000, WB:1:1000-1:5000,
IHC:1:20-1:200, IF:1:50-1:200

Protein Background:

Cytotoxin and helminthotoxin. Also induces non-cytolytic histamine release from human basophils. Involved in antiparasitic defense mechanisms and immune hypersensitivity reactions. The proform acts as a proteinase inhibitor, reducing the activity of PAPPa.

Gene ID:

PRG2

Uniprot

P13727

Synonyms:

Bone marrow proteoglycan (BMPG) (Proteoglycan 2) [Cleaved into: Eosinophil granule major basic protein (EMBP) (MBP) (Pregnancy-associated major basic protein)], PRG2, MBP

Immunogen:

Recombinant Human Bone marrow proteoglycan protein (151-195aa).

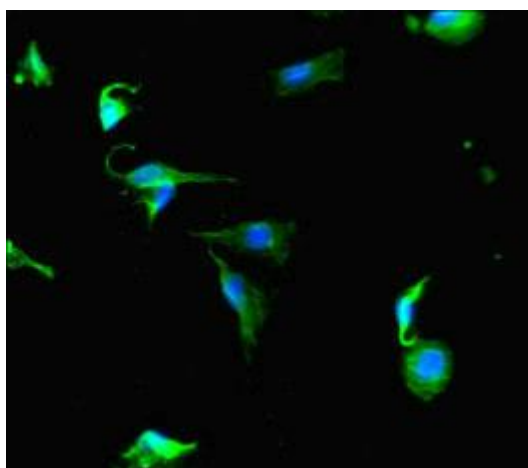
Storage:

Preservative: 0.03% Proclin 300. Constituents: 50% Glycerol, 0.01M PBS, PH 7.4

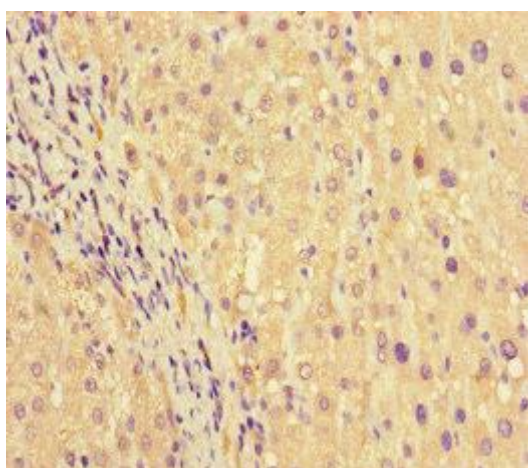
Product Images



Western blot. All lanes: PRG2 antibody at 14 $\mu\text{g/ml}$ + Human placenta tissue. Secondary. Goat polyclonal to rabbit IgG at 1/10000 dilution. Predicted band size: 26, 24 kDa. Observed band size: 26 kDa.



Immunofluorescent analysis of U251 cells using PACO46126 at dilution of 1:100 and Alexa Fluor 488-conjugated AffiniPure Goat Anti-Rabbit IgG(H+L).



Immunohistochemistry of paraffin-embedded human liver cancer using PACO46126 at dilution of 1:100.