

PACO46166

Product Information

Size:

50ug

Reactivity:

Human, Mouse

Source:

Rabbit

Isotype:

IgG

Applications:

ELISA, WB, IHC, IF

Recommended dilutions:

ELISA:1:2000-1:10000, WB:1:2000-1:5000,
IHC:1:20-1:200, IF:1:50-1:200

Protein Background:

May be part of an oligomeric complex which is likely to have a transport or channel function in the erythrocyte membrane.

Gene ID:

RHD

Uniprot

Q02161

Synonyms:

Blood group Rh(D) polypeptide (RHXIII) (Rh polypeptide 2) (RhPII) (Rhesus D antigen) (CD antigen CD240D), RHD

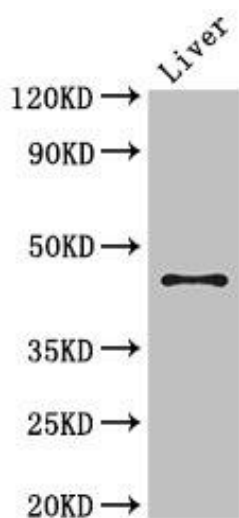
Immunogen:

Recombinant Human Blood group Rh(D) polypeptide protein (32-76AA).

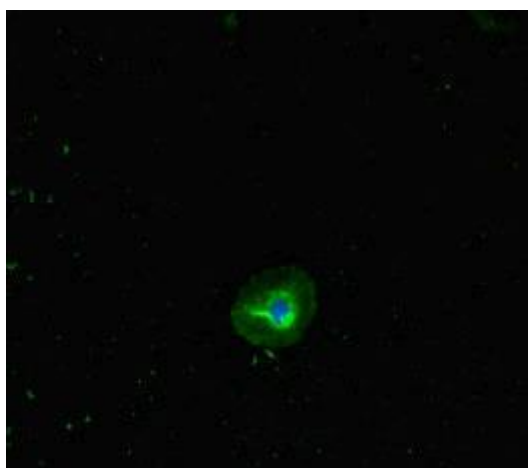
Storage:

Preservative: 0.03% Proclin 300. Constituents: 50% Glycerol, 0.01M PBS, PH 7.4

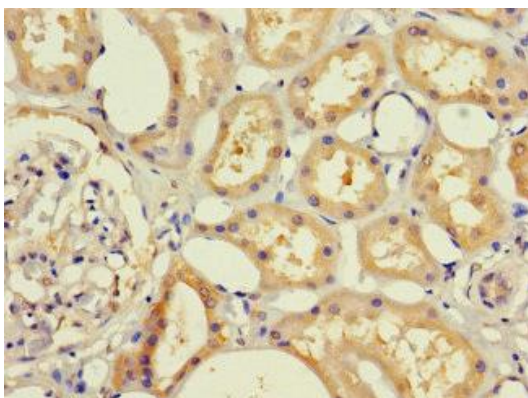
Product Images



Western Blot. Positive WB detected in: Mouse liver tissue. All lanes: RHD antibody at 3 μ g/ml. Secondary. Goat polyclonal to rabbit IgG at 1/50000 dilution. Predicted band size: 46, 35, 54, 44, 42 kDa. Observed band size: 46 kDa.



Immunofluorescent analysis of A549 cells using PACO46166 at dilution of 1:100 and Alexa Fluor 488-conjugated AffiniPure Goat Anti-Rabbit IgG(H+L).



Immunohistochemistry of paraffin-embedded human kidney tissue using PACO46166 at dilution of 1:100.