

## Product Information

**Size:**

50ug

**Reactivity:**

Human

**Source:**

Rabbit

**Isotype:**

IgG

**Applications:**

ELISA, IHC, IF

**Recommended dilutions:**

ELISA:1:2000-1:10000, IHC:1:20-1:200,  
IF:1:50-1:200

**Protein Background:**

May be involved in the assembly, secretion and targeting of TGFB1 to sites at which it is stored and/or activated. May play critical roles in controlling and directing the activity of TGFB1. May have a structural role in the extra cellular matrix (ECM).

**Gene ID:**

LTBP4

**Uniprot**

Q8N2S1

**Synonyms:**

Latent-transforming growth factor beta-binding protein 4 (LTBP-4), LTBP4

**Immunogen:**

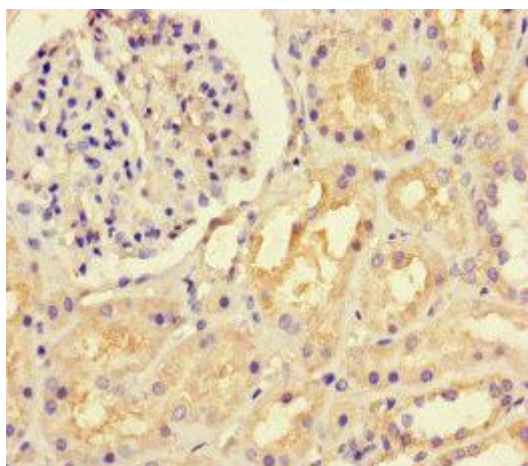
Recombinant Human Latent-transforming growth factor beta-binding protein 4 protein (977-1180AA).

**Storage:**

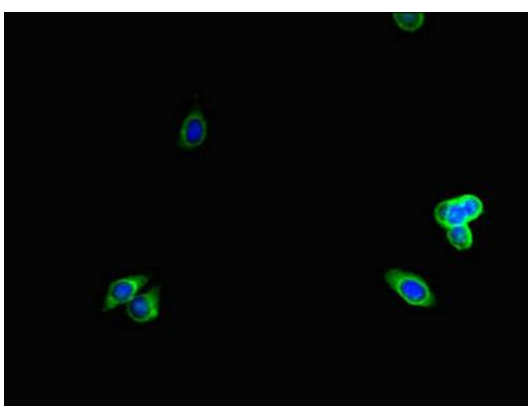
Preservative: 0.03% Proclin 300. Constituents: 50% Glycerol, 0.01M PBS, PH 7.4

## Product Images

---



Immunohistochemistry of paraffin-embedded human kidney tissue using PACO46178 at dilution of 1:100.



Immunofluorescent analysis of HepG2 cells using PACO46178 at dilution of 1:100 and Alexa Fluor 488-conjugated AffiniPure Goat Anti-Rabbit IgG(H+L).