

S100P Antibody



PACO46190

Product Information

Size:

50ug

Reactivity:

Human

Source:

Rabbit

Isotype:

IgG

Applications:

ELISA, IHC, IF

Recommended dilutions:

ELISA:1:2000-1:10000, IHC:1:20-1:200,
IF:1:50-1:200

Protein Background:

May function as calcium sensor and contribute to cellular calcium signaling. In a calcium-dependent manner, functions by interacting with other proteins, such as EZR and PPP5C, and indirectly plays a role in physiological processes like the formation of microvilli in epithelial cells. May stimulate cell proliferation in an autocrine manner via activation of the receptor for activated glycation end products (RAGE).

Gene ID:

S100P

Uniprot

P25815

Synonyms:

Protein S100-P (Migration-inducing gene 9 protein) (MIG9) (Protein S100-E) (S100 calcium-binding protein P), S100P, S100E

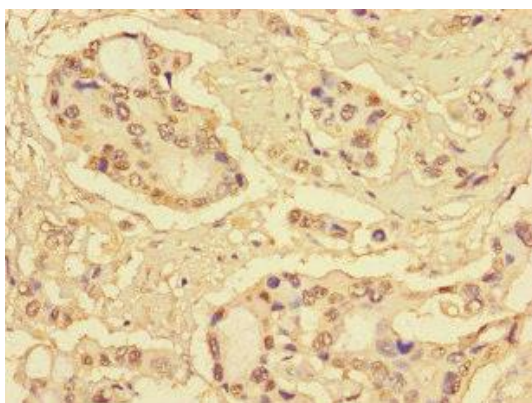
Immunogen:

Recombinant Human Protein S100-P protein (17-70AA).

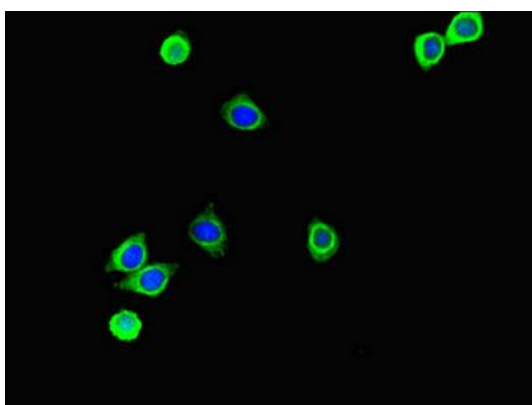
Storage:

Preservative: 0.03% Proclin 300. Constituents: 50% Glycerol, 0.01M PBS, PH 7.4

Product Images



Immunohistochemistry of paraffin-embedded human pancreatic cancer using PACO46190 at dilution of 1:100.



Immunofluorescent analysis of HepG2 cells using PACO46190 at dilution of 1:100 and Alexa Fluor 488-conjugated AffiniPure Goat Anti-Rabbit IgG(H+L).