

SIRPB1 Antibody



PACO46202

Product Information

Size:

50ug

Reactivity:

Human, Mouse

Source:

Rabbit

Isotype:

IgG

Applications:

ELISA, WB, IHC, IF

Recommended dilutions:

ELISA:1:2000-1:10000, WB:1:1000-1:5000,
IHC:1:20-1:200, IF:1:50-1:200

Protein Background:

Immunoglobulin-like cell surface receptor involved in the negative regulation of receptor tyrosine kinase-coupled signaling processes. Participates also in the recruitment of tyrosine kinase SYK.

Gene ID:

SIRPB1

Uniprot

O00241

Synonyms:

Signal-regulatory protein beta-1 (SIRP-beta-1) (CD172 antigen-like family member B) (CD antigen CD172b), SIRPB1

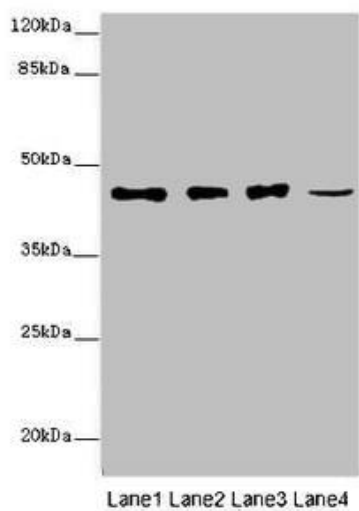
Immunogen:

Recombinant Human Signal-regulatory protein beta-1 protein (30-371AA).

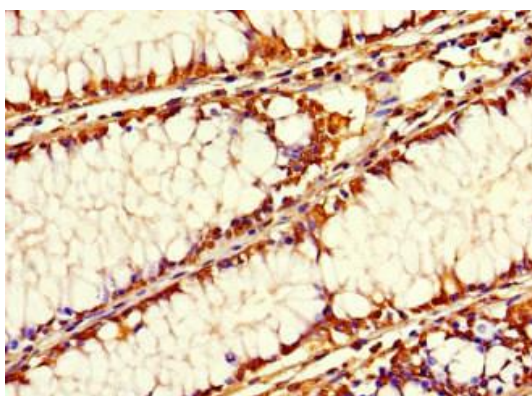
Storage:

Preservative: 0.03% Proclin 300. Constituents: 50% Glycerol, 0.01M PBS, PH 7.4

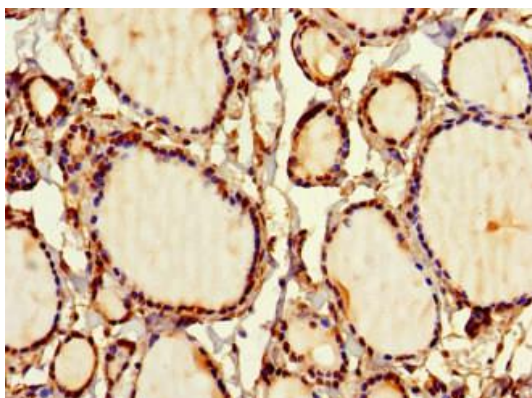
Product Images



Western blot. All lanes: SIRPB1 antibody at 6 μ g/ml. Lane 1: A549 whole cell lysate. Lane 2: PC-3 whole cell lysate. Lane 3: A375 whole cell lysate. Lane 4: Mouse heart tissue. Secondary. Goat polyclonal to rabbit IgG at 1/10000 dilution. Predicted band size: 44, 20 kDa. Observed band size: 44 kDa.



Immunohistochemistry of paraffin-embedded human colon cancer using PACO46202 at dilution of 1:100.



Immunohistochemistry of paraffin-embedded human thyroid tissue using PACO46202 at dilution of 1:100.