

STAT1 Antibody



PACO46242

Product Information

Size:

50ug

Reactivity:

Human

Source:

Rabbit

Isotype:

IgG

Applications:

ELISA, IHC, IF

Recommended dilutions:

ELISA:1:2000-1:10000, IHC:1:20-1:200,
IF:1:50-1:200

Protein Background:

Gene ID:

STAT1

Uniprot

P42224

Synonyms:

Signal transducer and activator of transcription 1-alpha/beta (Transcription factor ISGF-3 components p91/p84), STAT1

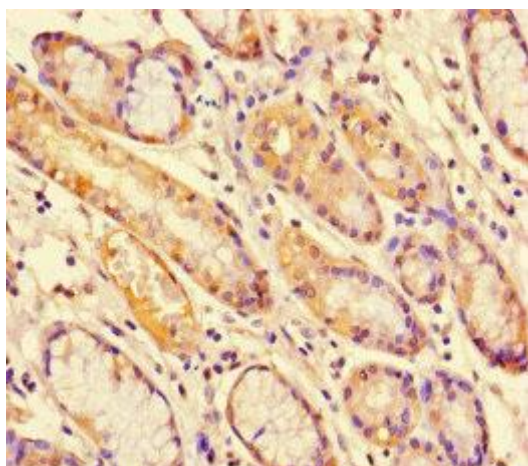
Immunogen:

Recombinant Human Signal transducer and activator of transcription 1-alpha/β protein (63-196AA).

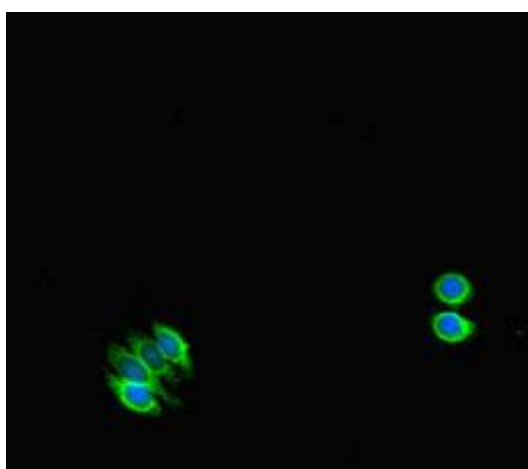
Storage:

Preservative: 0.03% Proclin 300. Constituents: 50% Glycerol, 0.01M PBS, PH 7.4

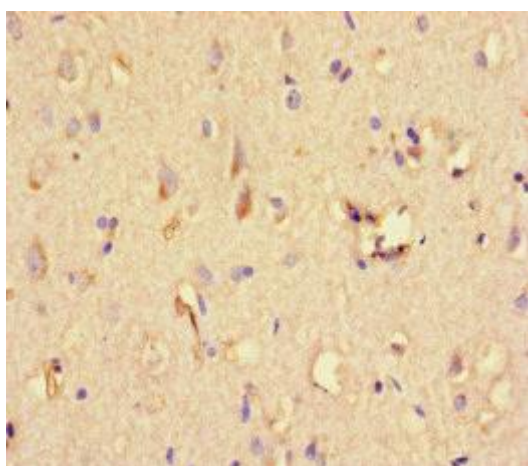
Product Images



Immunohistochemistry of paraffin-embedded human gastric cancer using PACO46242 at dilution of 1:100.



Immunofluorescent analysis of HepG2 cells using PACO46242 at dilution of 1:100 and Alexa Fluor 488-conjugated AffiniPure Goat Anti-Rabbit IgG(H+L).



Immunohistochemistry of paraffin-embedded human brain tissue using PACO46242 at dilution of 1:100.