

TUBA1C Antibody



PACO46302

Product Information

Size:

50ug

Reactivity:

Human, Mouse

Source:

Rabbit

Isotype:

IgG

Applications:

ELISA, WB, IHC, IP

Recommended dilutions:

ELISA:1:2000-1:10000, WB:1:500-1:5000,
IHC:1:20-1:200, IP:1:200-1:2000

Protein Background:

Tubulin is the major constituent of microtubules. It binds two moles of GTP, one at an exchangeable site on the beta chain and one at a non-exchangeable site on the alpha chain.

Gene ID:

TUBA1C

Uniprot

Q9BQE3

Synonyms:

Tubulin alpha-1C chain (Alpha-tubulin 6) (Tubulin alpha-6 chain) [Cleaved into: Detyrosinated tubulin alpha-1C chain], TUBA1C, TUBA6

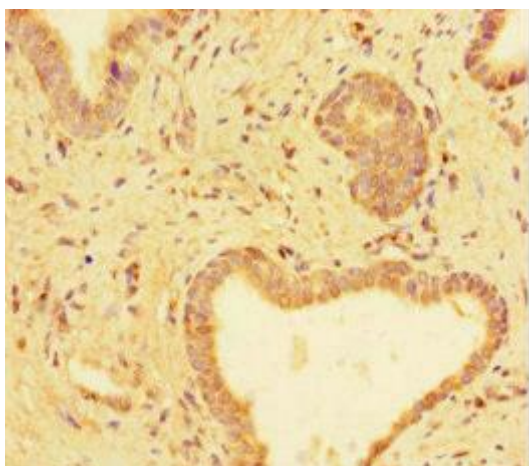
Immunogen:

Recombinant Human Tubulin alpha-1C chain protein (29-184AA).

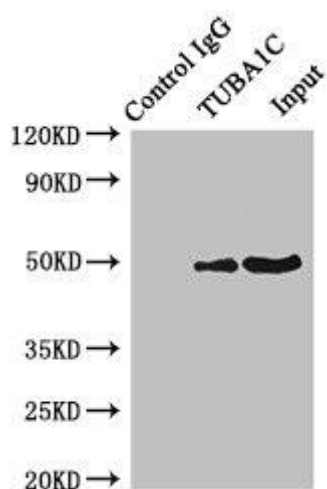
Storage:

Preservative: 0.03% Proclin 300. Constituents: 50% Glycerol, 0.01M PBS, PH 7.4

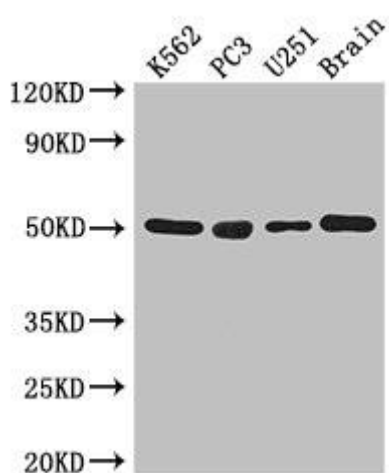
Product Images



Immunohistochemistry of paraffin-embedded human prostate cancer using PACO46302 at dilution of 1:100.



Immunoprecipitating TUBA1C in K562 whole cell lysate. Lane 1: Rabbit control IgG instead of PACO46302 in K562 whole cell lysate. For western blotting, a HRP-conjugated Protein G antibody was used as the secondary antibody (1/50000). Lane 2: PACO46302 (4 μ g) + K562 whole cell lysate (500 μ g). Lane 3: K562 whole cell lysate (20 μ g).



Western Blot. Positive WB detected in: K562 whole cell lysate, PC-3 whole cell lysate, U251 whole cell lysate, Mouse brain tissue. All lanes: TUBA1C antibody at 3 μ g/ml. Secondary. Goat polyclonal to rabbit IgG at 1/50000 dilution. Predicted band size: 50 kDa. Observed band size: 50 kDa.