

TUBB4A Antibody



PACO46306

Product Information

Size:

50ug

Reactivity:

Human

Source:

Rabbit

Isotype:

IgG

Applications:

ELISA, WB, IHC, IF

Recommended dilutions:

ELISA:1:2000-1:10000, WB:1:500-1:5000,
IHC:1:20-1:200, IF:1:50-1:200

Protein Background:

Tubulin is the major constituent of microtubules. It binds two moles of GTP, one at an exchangeable site on the beta chain and one at a non-exchangeable site on the alpha chain.

Gene ID:

TUBB4A

Uniprot

P04350

Synonyms:

Tubulin beta-4A chain (Tubulin 5 beta) (Tubulin beta-4 chain), TUBB4A, TUBB4 TUBB5

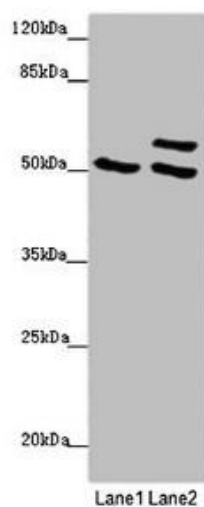
Immunogen:

Recombinant Human Tubulin beta-4A chain protein (1-444AA).

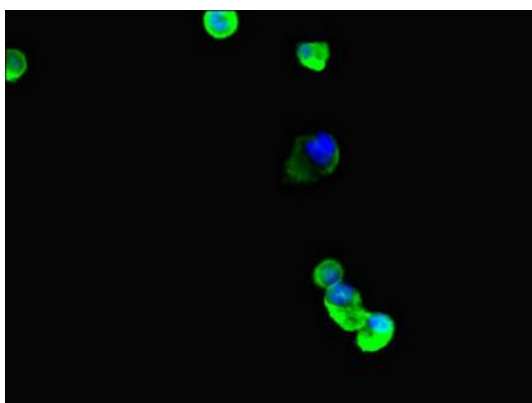
Storage:

Preservative: 0.03% Proclin 300. Constituents: 50% Glycerol, 0.01M PBS, PH 7.4

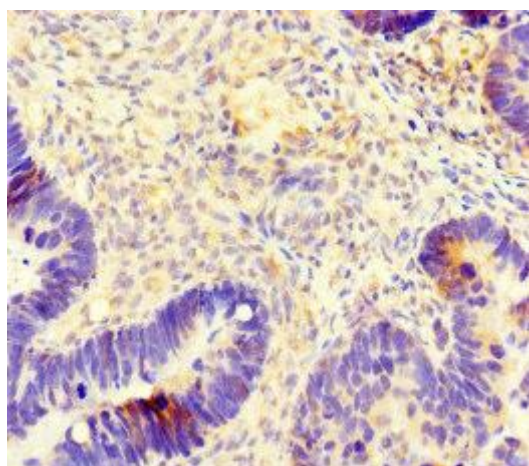
Product Images



Western blot. All lanes: TUBB4A antibody at 2 $\mu\text{g/ml}$. Lane 1: 293T whole cell lysate. Lane 2: HeLa whole cell lysate. Secondary: Goat polyclonal to rabbit IgG at 1/10000 dilution. Predicted band size: 50 kDa. Observed band size: 50, 58 kDa.



Immunofluorescent analysis of MCF-7 cells using PACO46306 at dilution of 1:100 and Alexa Fluor 488-conjugated AffiniPure Goat Anti-Rabbit IgG(H+L).



Immunohistochemistry of paraffin-embedded human ovarian cancer using PACO46306 at dilution of 1:100.